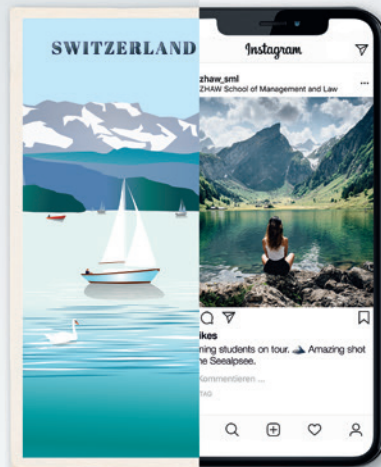


Zurich-Winterthur: Your Perfect Exchange Destination in Switzerland

Brochure for Incoming Students

2026/2027 Edition





“

Our commitment is to offer incoming students the best of Switzerland: high-quality teaching, outstanding infrastructure, academic theory combined with real-world relevance from experts directly involved in their field. A unique experience in an exceptional country that is first-rate, safe, and welcoming: Switzerland!

Welcome!

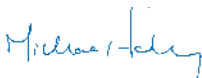
Want to study abroad? Think Swiss!

Excellent education, or fun and adventure? A vibrant city, or relaxing country life? Exploring innovation, or discovering the secrets of Swiss business success? You can have it all if you study with us in Zurich-Winterthur!


This brochure introduces the ZHAW School of Management and Law, one of Switzerland's leading business schools, and gives you an idea of what you can expect from a student exchange in Switzerland.

Experience the outstanding quality of Swiss higher education and benefit from the practical approach used at a university of applied sciences. Living in Switzerland means quality of life and security, lakes and mountains, chocolate and cheese, banks and innovation. Switzerland's remarkable political stability is admired as much as its excellent school system and its unique cultural and leisure opportunities. Its central location in the heart of Europe and excellent transportation links make it an ideal base for travel.

We look forward to welcoming you to Switzerland and to our university's exchange program.



Michael Farley
Head of International
Development & Projects



Greta Gnehm
Head of International Relations



Benno Baumberger
Operations Manager



Content

- 5 Reasons to Choose the ZHAW School of Management and Law for Your Student Exchange**
- 7 Benefits of Studying in Switzerland**
- 8 Amazing Places to Visit While Doing an Exchange in Switzerland**
- 11 About Zurich**
- 13 About Winterthur**
- 15 Campus Life**
- 17 5 Tips – From Former to Future Exchange Students**
- 19 Modules and Choice of Classes**
- 20 Bachelor’s Modules in English Academic Year 2026/2027**
- 27 Master’s Modules in English Academic Year 2026/2027**
- 30 Tips and Tricks – How to Live on a Small Budget in Winterthur**
- 31 Information for Exchange Students**
- 33 How to Apply for Your Exchange Program: A Step-by-Step Guide**
- 34 Useful German Phrases**
- 36 The International Office**
- 38 The SML in Figures**

Reasons to Choose the ZHAW School of Management and Law (SML) for Your Student Exchange



AWARDED AND ACCREDITED

With AACSB, EQUIS, and AMBA accreditation, the SML has been awarded the “Triple Crown” – three renowned seals of approval that internationally recognize the quality of our degree, research, and continuing education programs. The SML is regularly featured in the “Financial Times Rankings,” including the best European business schools list.



PRACTICAL ORIENTATION AND EXPERIENCED LECTURERS

Faculty members at the SML are not only highly qualified academics; they also have years of practical experience and access to an extensive professional network.



WIDE RANGE OF SUBJECTS

The programs offered provide students with specialized knowledge that is up to date and geared towards the specific needs of the business world. Incoming students can choose between more than 100 modules of all different degrees offered at the SML. We have particular specializations (majors) in Business Administration, International Management, Business Information Technology, Business Law, and Applied Law.



CENTRAL LOCATION

Situated in the student town of Winterthur, the SML is also conveniently close to downtown Zurich, Zurich Airport, and the German border. All can be reached by train or car in 15–30 minutes, making our campus a convenient starting point from which to explore the rest of Switzerland and the whole of Europe.



INFORMATION AND SUPPORT

Every year, the International Office at the SML welcomes more than 200 exchange students from over 30 countries. The International Office is their point of contact, and its team is committed to supporting them every step of the way to ensure their time in Switzerland is well spent and as enjoyable as possible.



© Zurich Tourism / Nobi Flum



Benefits of Studying in Switzerland

Make the most of a unique study experience

While earning credits for transfer to your study program back home, you will also gain firsthand insight into a wide range of companies and industries and have plenty of opportunities to travel.

94%

of our incoming students recommend the SML for an exchange

783

nationalities are represented at the SML

189

partner universities in 50 countries

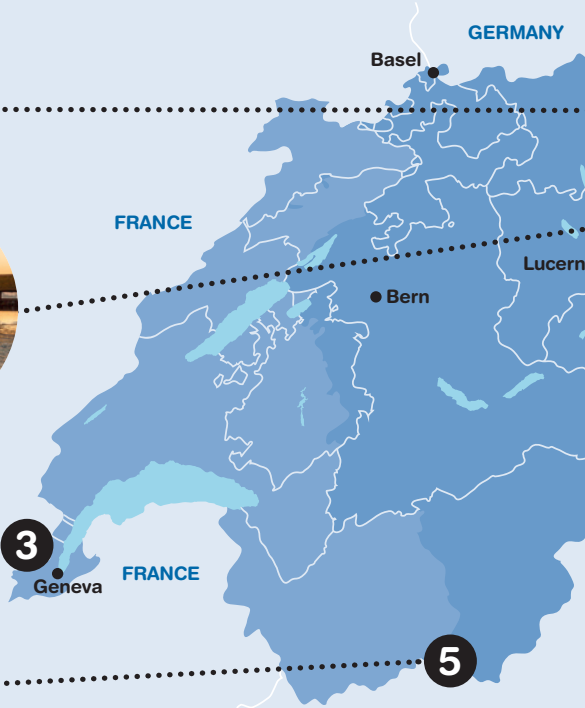
AT THE HEART OF EUROPE

Be amazed and inspired by Switzerland's imposing financial districts and its breathtaking landscape with lakes, castles, quaint villages, and, of course, the Swiss Alps. Switzerland is located in the center of Europe, bordered by Germany, France, Italy, Austria, and Liechtenstein. Its culture is a rich mix of these influences and reflects the diversity of its geography and the languages spoken. This is also apparent in Switzerland's multicultural business environment that has attracted many international corporations keen to benefit from low tax rates, an excellent infrastructure, and enhanced quality of life.

OUTSTANDING EDUCATION AND ENVIRONMENT

As a student in Switzerland, you will benefit from the country's high-quality education system, aided by a state-of-the-art teaching and learning environment, experienced lecturers, and the opportunity to exchange ideas and network with students from around the world. Your studies will enable you to gain valuable insights into a world-leading banking and finance industry. Uncover the secret of Swiss business success and of Swiss excellence in research and innovation. On top of that, you can go sightseeing, engage in sports and social activities, and enjoy a vibrant city and nightlife as well as the country's natural beauty – all in a location known for safety and political stability.

Amazing Places to Visit While Doing an Exchange in Switzerland



Languages of Switzerland

■ German ■ French ■ Italian ■ Romansh

Immerse yourself in Swiss culture during your study breaks and discover hidden gems, local hotspots, and breathtaking views.

1 Best photo spot: Äscher-Wildkirchli. A trip by aerial cableway to Ebenalp (Appenzell) followed by a short walk takes visitors to the world-famous mountain restaurant built directly onto the rock face. One of the

most beautiful places in the world, according to National Geographic.

2 Closest to that Mediterranean feeling: Ticino. The Italian-speaking region in the south of Switzerland boasts beautiful lakes, romantic villages, and delicious food.

3 A cosmopolitan city: Geneva. Take a four-hour train ride across the country to the

French-speaking region of Switzerland, and explore the “City of Peace,” home to the European domicile of the UN and the International Committee of the Red Cross.

4 Best place to connect: OpenAir St. Gallen. One of the largest of the many outdoor music festivals and a great way to meet other young people in Switzerland while listening to the music of top-class acts (June).



5 Best all-year snow: **Zermatt.** This winter sports paradise at the foot of the Matterhorn in the Swiss Alps is the highest ski resort in Europe. Enjoy summer skiing or snowboarding on the glacier at nearly 4,000 m (13,000 feet) above sea level!

6 Best star-spotting: **Zurich Film Festival.** Moviegoers love this event, which attracts many Hollywood celebrities (September).

There is also a similar festival close to the Swiss-Italian border, the famous Locarno Film Festival (August).

7 Natural beauty: **Rheinfall, Schaffhausen.** The largest waterfall in Europe next to the medieval old town of Schaffhausen.

8 The world's most beautiful view: **Lake Lucerne.** For an unforgettable experience, take a

steamboat across Lake Lucerne, combining it with a ride in a cable car or cogwheel train to the top of nearby Mt. Pilatus or Rigi and a leisurely walk through the beautiful old town of Lucerne.

Quick Facts i

Population: 8.99 million

Capital: Bern

Largest city: Zurich



© Zurich Tourism



© Switzerland Tourism

About Zurich

At the heart of banking and finance

Zurich: the most important cultural, commercial, and financial center with unique cultural and leisure opportunities, and efficient infrastructure.

ZURICH

A short train ride takes you from Winterthur and its university campus to Zurich, the largest city in Switzerland. The canton of Zurich, to which Winterthur belongs, is home to about 1.6 million people and is one of Europe's wealthiest and economically strongest areas.

Zurich regularly ranks among the top most liveable cities in the world and has so much to offer in terms of sightseeing, shopping, culture, and nightlife.

The primary language spoken here is "Züri-tüütsch," a Swiss-German dialect. All locals understand German, however, and many also understand and speak English and French.

Highlights



- **Seebad Enge:** This is one of Switzerland's most attractive outdoor swimming pools. It is situated on Lake Zurich against a backdrop of Alpine peaks and turns into a bar and concert venue in the evening.
- **Street Parade:** Every August, the world's largest techno party draws hundreds of thousands of ravers and visitors to Zurich.
- **Uetliberg:** A train as well as numerous walking trails lead to the top of Zurich's very own mountain, which offers panoramic views across Lake Zurich, the Glarner Alps, and Central Switzerland.



About Winterthur

Year-round cultural and social activities

Winterthur and the Greater Zurich Area offer the perfect backdrop to a study-abroad experience. You will soon feel at home and will never run out of things to do.

WINTERTHUR

Winterthur, home to the Zurich University of Applied Sciences, is the sixth largest city in Switzerland, with a population of over 120,000. Formerly a prosperous industrial center, it is now a campus town of growing importance with a bustling city center, yet surrounded by green countryside. Winterthur is safe and student-friendly with all the advantages of city life. It also has a vibrant cultural scene that appeals to all tastes. Especially in the old town and in the converted industrial zone near the railway station, young people have a wide choice of restaurants, bars, clubs, movie theaters, and sports activities.

For something different, try a game of urban golf or laser tag, go geocaching, or fight your way out of an escape room.

Highlights



- **Old town:** The medieval heart of Winterthur is full of life and a meeting place for locals and tourists, students, and business people alike.
- **Christmas market:** Enjoy a festive atmosphere in the heart of the old town during the holiday season.
- **Albanifest:** Europe's largest annual city festival with fairground rides, live music, and countless stalls selling food and drinks (last weekend in June).



Campus Life

Everything you need for a successful experience

The ZHAW School of Management and Law campus is housed in several buildings in Winterthur and has a modern, user-friendly infrastructure.

BUDDY AND TANDEM PROGRAMS

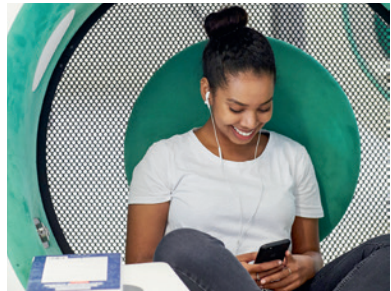
The International Office provides all exchange students with a local “buddy” at the beginning of the semester who will accompany them during their first days after arrival and assist them with any questions they may have during their stay. In addition, the ZHAW School of Management and Law (SML) has a language tandem program enabling exchange students to learn basic German from a local student in return for teaching them some of their own language.

CAMPUS

The SML buildings are situated in Winterthur’s city center within easy walking distance of the railway station. Students benefit from amenities such as modern classrooms and lecture halls, quiet group work areas, and a cafeteria selling a wide selection of hot and cold food and beverages, including vegetarian and vegan options.

UNIVERSITY LIBRARY

The ZHAW University Library is a state-of-the-art media, information, and study center extending over 6,000 m² (65,000 square feet). Its print collection holds more than 120,000 titles. Online resources include e-books and journals, as well as an extensive network of international databases, and the library’s staff is more than happy to provide research support. There are some 700 group and individual work spaces, including computer workstations on several floors, as well as a coffee shop. ZHAW students have 24/7 access to the building.





SPORTS AT ZHAW

From A for Aikido to Z for Zumba, the ASVZ (Academic Sports Association Zurich) offers over 120 different sports in Winterthur and Zurich. Students benefit from an extensive infrastructure with modern sports equipment as well as supervision and training by professional instructors. Our exchange students are entitled to free ASVZ membership. >>> www.asvz.ch

choose between renting a room in the WOKO student residence (Camp AXA), applying for a private room with a host family, or occupying the room/apartment of a local student away on an exchange. The International Office at the SML assists all exchange students in finding accommodation. >>> www.woko.ch

ERASMUS STUDENT NETWORK (ESN)

The Erasmus Student Network is a Europe-wide student organization that actively promotes international exchange. The local ESN Winterthur organization is committed to enhancing the exchange experience for international students by organizing social activities such as excursions and parties throughout the semester.

ACCOMMODATION

Winterthur has attractive residential areas and a high standard of living. Exchange students can



5 Tips – From Former to Future Exchange Students



Don't be afraid to contact Student Services or the International Office. They can answer most questions and will be able to help you with even the most difficult problems.



Don't let exchange stress get you down. Just take it one step at a time, and use the help available (see first tip).



Sign up for more ECTS credits than you need. Some modules might be more difficult than you anticipate, and this will enable you to compensate.



Consider buying both “Halbtax” (half fare) and “GA night” (free travel from 7 pm to 5 am) travel cards. They will encourage you to explore Switzerland.



Familiarize yourself with rules and procedures, stick to your class schedule, and make a financial budget you can follow. This will ensure a trouble-free exchange.



#WatchVideos

“

“I really liked the quality of the lectures taught by experts in their field. My exchange semester in Switzerland allowed me to discover beautiful sceneries in just a short period of time.”

Elodie Abt, Kedge Business School, France

Modules and Choice of Classes

How to choose your classes

The ZHAW School of Management and Law (SML) offers Bachelor's and Master's degree programs that are scientifically sound, interdisciplinary, and characterized by a high level of practical orientation.

MODULE OFFER

Swiss degree programs have a modular structure. At the SML, a growing number of modules are taught in English as part of the school's regular Bachelor's and Master's programs. These modules are ideal for exchange students, who can study alongside their Swiss peers. Exchange students whose language skills meet the requirements are welcome to choose modules offered in either German or English or a combination of both. You can create your individual class schedule from the full range of modules on offer. Final module registration takes place during Orientation Week with full support from the International Office.

WORKLOAD

The workload of a full-time student at the SML equals 30 ECTS credits per semester, with one credit requiring 25–30 hours of study. The number of credits an incoming student must acquire is determined by his or her home university. However, the SML expects all incoming students to earn between 15 (min.) and 45 (max.) ECTS credits during their exchange semester.

GRADING SCALE

Like most Swiss universities, the SML uses a grading scale ranging from 1.0 to 6.0. The minimum pass grade is 4.0, and the maximum achievable grade is 6.0. To help your home university transfer your credits, an additional ECTS grade between A and F is also awarded.

Bachelor's Modules in English

Academic Year 2026/2027

GENERAL MANAGEMENT & INTERNATIONAL MANAGEMENT

Semester	Module Name	ECTS
Fall	Advanced International Business	6
Fall	Artificial Intelligence and Data Science for Insurance	6
Fall	Corporate Responsibility	3
Fall	Human Resources	3
Fall	International Business	6
Fall	International Strategic Management	6
Spring & Fall	Global Marketing Management for Incomings	6
Spring & Fall	Intercultural Management for Incomings	6
Spring & Fall	International Negotiation for Incomings	6
Spring & Fall	Strategic Management for Incomings	6
Spring	Intermediate Accounting	6
Spring	Intermediate Finance	6
Spring	Intermediate Marketing	6
Spring	International Politics & Business	6
Spring	Operation & Process Management	6
Spring	Product Development Management	6

BANKING AND FINANCE & FINANCIAL MANAGEMENT

Semester	Module Name	ECTS
Fall	Swiss Financial Systems and Finance	3
Spring & Fall	Consolidated Financial Statements	6
Spring & Fall	Corporate Finance & Commercial Banking	6
Spring & Fall	Financial Instruments & Portfolio Theory	6
Spring & Fall	Financial Strategies	6

BUSINESS INFORMATION SYSTEMS & DATA SCIENCE

Semester	Module Name	ECTS
Fall	Data Analytics	6
Fall	Data Science and Technology for Insurance	6
Fall	Machine Learning I	6
Fall	Mastering the Extremes	3
Spring & Fall	Data Management	6
Spring & Fall	Leadership, Ethics & Intercultural Competence	6
Spring	Data Science Introduction	3
Spring	Data Analysis with SAS	3
Spring	AI-Applications	3
Spring	IT-Security	6
Spring	Machine Learning II	6
Spring	Machine Learning Using SAS Viya	3
Spring	Scientific Programming	3

BUSINESS LAW

Semester	Module Name	ECTS
Spring & Fall	Anglo-American Law	3
Spring & Fall	Compliance & Corporate Responsibility	6
Spring & Fall	Data Protection and Data Management	3
Spring & Fall	European Law	6
Spring & Fall	Public International Law and Legal Systems	3
Spring	Debating and Arguing in the Common Law	3

ALL STUDY FIELDS

Semester	Module Name	ECTS
Fall	Climate and Energy Economics	3
Fall	International Negotiation	3
Fall	Investor Relations and Equity Analysis	3
Fall	Leading Digital Transformation and AI	3
Fall	Online Marketing: The Challenge	3
Fall	Strategic Diversity Management	3
Fall	Sustainable Finance	3
Spring & Fall	Brand Management	3
Spring & Fall	Behavioral Finance	3
Spring & Fall	Business in Emerging Markets	3
Spring & Fall	Business Value of Blockchain	3
Spring & Fall	Crisis Management: Action Planning & Directing	3
Spring & Fall	Customer Insights	3
Spring & Fall	Data Analysis and Presentation in Excel and Python	3
Spring & Fall	Digitalization and Law	3
Spring & Fall	Doing Business in Asia Pacific	3
Spring & Fall	Doing Business in Europe	3
Spring & Fall	Empirical Methods in Economics	3
Spring & Fall	European Affairs	3
Spring & Fall	Family Business Management	3
Spring & Fall	Information, Incentives and Strategic Thinking	3
Spring & Fall	International Trade and Policy	3
Spring & Fall	Introductions to Swiss Society and Politics	2
Spring & Fall	Mergers & Acquisitions	3
Spring & Fall	Of Choices and Mistakes: The Economics of Decision-Making	3
Spring & Fall	Smart Data Analytics for Financial Assets	3
Spring & Fall	Supply Chain Management	3

ALL STUDY FIELDS

Semester	Module Name	ECTS
Spring	AI-Based Product Development	3
Spring	Business-Government Relations	3
Spring	Business in the Climate Crisis	3
Spring	Cultural People Engagement	3
Spring	Cases in Disruptive Innovation	3
Spring	Digital Reputation Marketing	3
Spring	Doing Business in Latin America	3
Spring	Doing Business in the Middle East	3
Spring	Environmental Economics and Politics	3
Spring	Firms in the Global Economy	3
Spring	Focal Points in Current Affairs	3
Spring	History of Financial Crises	3
Spring	How to Manage Risks by Transfer to Insurance	3
Spring	International Corporate Responsibility Management	3
Spring	International Environment of Business	3
Spring	International Relations and Diplomacy	3
Spring	Introduction to Behavioral Economics	3
Spring	Introduction to Luxury Management	3
Spring	Learning from Disasters	3
Spring	MCE – Managing Circular Economy	3
Spring	Managing Bioeconomy	3
Spring	Quantitative Methods and Big Data for Managers	3
Spring	War, Economics and Business	3



LANGUAGE AND COMMUNICATION

Semester	Module Name	ECTS
Spring & Fall	Business English	3
Spring & Fall	Business English Advanced	3
Spring & Fall	Business English Advanced 2	3
Spring & Fall	German Beginners	3
Spring & Fall	German Intermediate	3
Spring & Fall	Legal English 1	3
Spring & Fall	Legal English 2	3
Spring & Fall	Legal English Advanced 1	3
Spring & Fall	Legal English Advanced 2	3
Fall	English C1	3



#WatchVideos

“

“I came to Switzerland not only because of the highly qualified teachers but also because of the outstanding natural beauty and diverse countryside. There are so many things to see and do.”

Lara Bergamaschi, University of Modena and Reggio Emilia, Italy

Master's Modules in English

Academic Year 2026/2027

BANKING & FINANCE

Semester	Module Name	ECTS
Fall	Corporate and Entrepreneurial Finance	3
Fall	International Economics	3
Fall	Investments	6
Fall	Quantitative Methods	6
Spring	Agile and Innovation Methods	6
Spring	Bank Management	3
Spring	Customer Behavior Research Methods	3
Spring	Customer Experience Management	3
Spring	International Wealth Management	3
Spring	Quantitative Investment Strategies	6
Spring	Real Estate Markets	3
Spring	Real Estate Valuation	3
Spring	Risk Management	6
Spring	Strategic Management	3
Spring	Sustainable Investments	3

MANAGEMENT AND LAW

Semester	Module Name	ECTS
Fall	International Economics and Politics	6
Spring & Fall	Applied Research Projects	6
Spring	International Labor and Security Law	6
Spring	Managing Strategy	6
Spring	Regulation and Competition	6

BUSINESS ADMINISTRATION – MAJOR INNOVATION AND ENTREPRENEURSHIP

Semester	Module Name	ECTS
Fall	Innovation Ecosystems	6
Fall	International Entrepreneurship	6
Fall	Sustainability	3

BUSINESS ADMINISTRATION – MAJOR MARKETING

Semester	Module Name	ECTS
Fall	Automation and AI in Marketing	3
Fall	Brand Management, Communications & Reputation Management	6
Fall	Consumer Psychology	3
Fall	Digital Marketing for Start-ups	3
Fall	E-Commerce	3
Fall	Marketing Technology	3
Fall	Pricing & Business Models in the Digital Age	6

BUSINESS ADMINISTRATION – MAJOR ENTERPRISE DEVELOPMENT

Semester	Module Name	ECTS
Fall	Digital Futures & Responsible Innovation	6
Fall	New Value Creation	6
Fall	People Analytics	3
Fall	Rethinking Leadership	6

BUSINESS INFORMATION TECHNOLOGY

Semester	Module Name	ECTS
Fall	Collaborate with AI Systems	3
Fall	Design and Develop AI Systems	3
Fall	IT-Governance, Risk Management and Compliance	3

CIRCULAR ECONOMY MANAGEMENT

Semester	Module Name	ECTS
Fall	Bioeconomy / Materials	3
Fall	Critical Thinking	3
Fall	Drivers – Politics and Governance	3
Fall	International and Swiss Law – Circular Economy	3
Fall	Life Cycle Sustainability Assessment	3
Fall	Manufacture	3
Fall	Material and Energy Systems	3
Fall	Organizations and Environment, Social and Governance	3
Fall	Supply Chains – Value Chains	3
Fall	Sustainability – Sufficiency – Efficiency – Consistency	3
Spring	Behavioral Psychology	3
Spring	Business Models for the Circular Economy	3
Spring	Change Management	3
Spring	Communication and Consulting	6
Spring	Data Analysis and Monitoring	6
Spring	Design	3
Spring	Systems and Potential Analysis	6
Spring	Technology Assessment	6
Spring	Transformation Processes	3

Tips and Tricks – How to Live on a Small Budget in Winterthur



FITNESS

- ASVZ (Academic Sports Association Zurich): membership included with your ZHAW Campus Card. Choose from over 120 different activities!
 - Fitness and nature trails invite you to walk, jog, and bike
 - Several rivers and lakes nearby offer free sunbathing and swimming
-



FOOD

- Use local “Stop Food Waste” programs like Äss-Bar or Too Good To Go
 - Ask for a student discount with your ZHAW Campus Card
 - Buy food in bulk, buy store brand products (Migros: MBudget, Coop: Prix Garantie). Denner, Aldi, and Lidl are discounters
-



SHOWS

- Theater: half-price tickets with the “Applaus!” Card
 - Movies: many cinemas (e.g., Cameo) offer student discounts
 - Check for cheap tickets on ronorp.net or gudle.com
-



SHOPS

- Seasonal sales: late June/late December
 - Clothes swap events at ZHAW SML and Salzhaus
 - Electronics: VSZHAW Techshop, digitec.ch, galaxus.ch, toppreise.ch
 - Second-hand and thrift stores (“Brockenhaus” in German)
 - Many stores offer student discounts (ZHAW Campus Card)
-



PARTY

- Go to bars and clubs during “happy hour,” check out the Archbar student pre-weekend party for ZHAW students on Thursdays from 5 pm
 - Albanifest: a three-day festival in late June
 - Musikfestwochen: music festival in early August. Nine days of free concerts!
 - Fasnacht: a three-day carnival in February/March
-

Information for Exchange Students

Important details to keep in mind

The ZHAW School of Management and Law (SML) has many years of experience supporting the international students who enroll in our exchange programs.

ORIENTATION WEEK

As an exchange student, you will be expected to arrive one week before classes start to attend a mandatory week of orientation. During Orientation Week, you will be welcomed by the International Team, taken on a tour of the campus, and be provided with everything you need to know about your upcoming exchange semester (e.g., the Swiss health insurance system, our IT infrastructure, traveling around in Switzerland, and much more). There will also be plenty of opportunities to meet and get to know the other exchange students.

Why Switzerland?



- #1 in the world for international innovation (Global Innovation Index 2025)
- #2 in the world for global talent competitiveness (INSEAD 2025)
- One of the safest countries in the world (#4, Global Peace Index 2025)
- High standard of living
- #3 in the world for health (OECD Better Life Index)

IMPORTANT DATES 2026/2027

Semester	Fall (Sept – Jan)	Spring (Feb – June)
Application deadline	31 May 2026	20 October 2026
Start of Orientation Week	7 September 2026	16 February 2027
First day of classes	14 September 2026	22 February 2027
Start of exam period	18 January 2027	14 June 2027
End of exam period	6 February 2027	3 July 2027

ADMISSION REQUIREMENTS

- Language: The expected skill level is a B2+ (Common European Framework) in English or German. However, a level of C1 for German-taught modules is strongly recommended but a must for Master modules. The SML only accepts the following proof of language proficiency:
 - TOEFL iBT 83/4.5 and iBT Home (valid for 2 years)
 - Cambridge First (FCE)
 - Cambridge Advanced (CAE)
 - Cambridge Business (BEC)
 - Cambridge Linguaskill (minimum B2)
 - Duolingo minimum 115 (valid for 2 years)
 - IELTS 5.5 (valid for 2 years)
 - TOEIC Listening and Reading, combined score 450
 - Official confirmation letter of language proficiency from home institution
 - Successfully completed International Baccalaureate (IB) diploma in English
- A minimum of two completed semesters (at Bachelor's level) before the start of the exchange
- No minimum GPA required

HEALTH INSURANCE

Basic health insurance is required by law in Switzerland. Students from the European Union and UK are exempt from this obligation, provided they submit a copy of their European Health Insurance Card (EHIC) or Global Health Insurance Card (GHIC), which must be valid for

the entire duration of their stay. The International Office assists all non-EU exchange students in obtaining a Swiss health insurance policy (monthly premium: CHF 61–99).

SEMP

Incoming students from European partner institutions can apply for a grant in the total amount of CHF 1,900 to 2,200 per semester from the Swiss European Mobility Program (SEMP). The International Office will provide those exchange students with all the documents and information needed.

LIVING EXPENSES

The cost of living in Switzerland reflects the country's high standard of living. Student living costs in Switzerland compare favorably with those in major European cities and depend heavily on personal lifestyle. Based on the experience of former students, on average, CHF 1,500 a month should be sufficient. A typical student budget for one month includes:

Estimated Expenses*		in CHF
Item	From	To
Rent and utilities	600	750
Food	400	500
Public transportation	40	100
Leisure activities	200	300
Course materials	40	50
Other expenses	100	150
Total	1,380	1,850

* Additional expenses might occur

How to Apply for Your Exchange Program: A Step-by-Step Guide

1

APPLY FOR YOUR SEMESTER/YEAR ABROAD AT YOUR HOME UNIVERSITY

Consult with your home university to clarify the requirements for studying abroad. After successful application at your home university, they will send us your nomination.

2

NOMINATION CONFIRMATION

You will receive a confirmation e-mail from us with all the information and documents needed for the online application process.

3

APPLY FOR YOUR SEMESTER/YEAR ABROAD AT THE ZHAW SCHOOL OF MANAGEMENT AND LAW

Apply online for your semester/year abroad before the deadline (31 May for the fall semester, 20 October for the spring semester).

4

CONFIRMATION OF YOUR SEMESTER/YEAR ABROAD AT THE ZHAW SCHOOL OF MANAGEMENT AND LAW

After we have processed your application, you will receive your letter of acceptance from us with all further relevant information (accommodation, visa process, health insurance, etc.).

5

ARRIVAL AT THE ZHAW SCHOOL OF MANAGEMENT AND LAW

We will welcome all new exchange students during Orientation Week, where we will guide you through your first days, and you will have the chance to get to know each other and our school.

Useful German Phrases

Ja. Yes.

Nein. No.

Grüezi. Hello.
(only used in Switzerland)

Hallo. Hello.
(used in Germany)

Hilfe! Help!

Vielleicht. Maybe.

Sprechen Sie Englisch? Do you speak English?

Guten Morgen. Good Morning.

Entschuldigung. Sorry.



Ich hätte gerne einen Kaffee. I would like to have a coffee.

Danke. Thanks.

(German word)

Merci. Thanks.

(French word used in Swiss German)

Ich weiss es nicht. I don't know.

Wie viel kostet das? How much does it cost?

Begin to speak
a little of the most
widely spoken of
Switzerland's four
official languages:

German, 62%
French, 23%
Italian, 8%
Romansh, 0.5%

Tschüss. Goodbye.

Woher kommst du? Where are you from?

The International Office

Your first point of contact for all inquiries

The International Office will help you apply to the ZHAW School of Management and Law (SML), get settled into your new environment in Switzerland, and enjoy a memorable academic journey abroad.

SUPPORT FROM START TO FINISH

The International Office at the SML is the first point of contact for exchange students. It supports you throughout the entire application process and handles all questions before, during, and after your exchange. The staff members at the International Office have many years of experience in student exchange and are fully competent when it comes to advising and supporting students from all over the world. The International Office is always highly praised by former exchange students for its assistance, personal service, and friendliness.

How to Get in Touch With Us



What are you waiting for?
See you soon in Switzerland!

ZHAW School of Management
and Law

International Office
St.-Georgen-Platz 2
8400 Winterthur

international.sml@zhaw.ch

>>> www.zhaw.ch/sml/incoming

YOUR CONTACTS AT THE INTERNATIONAL OFFICE



Benno Baumberger
Operations Manager



Sandra Aerne
Incoming Coordinator,
Europe



Suzana Ilic
Incoming Coordinator,
Overseas



Dr. Philipp Gwerder
Academic Support
Coordinator

Céline Goetschi
Incoming Coordinator,
Overseas

YOUR CONTACTS AT INTERNATIONAL RELATIONS



Michael Farley
Head of International
Development &
Projects



Greta Gnehm
Head of International
Relations



Lena Abadesso
International Relations
Coordinator



Céline Goetschi
International Relations
Coordinator

The SML in Figures

Our profile for your success

Established in 1968, the ZHAW School of Management and Law (SML) is one of Switzerland's leading business schools.

5

Bachelor's degree programs (BSc)
10 specializations

7

Master's degree programs (MSc)
5 specializations

>190

continuing education programs

645

members of faculty and staff

9,507

students in BSc, MSc, and continuing education programs

>35,000

graduates since 1968

210

classes at the SML

37%

of modules taught in English

420

lecturers at the SML





#WatchVideos

“

“The first months here were filled with a lot of activities in the Swiss Alps, and I got to know so many nice people.”

Jens Mayer, Hochschule Bonn-Rhein-Sieg, Germany

Zurich University
of Applied Sciences

**School of
Management and Law**

St.-Georgen-Platz 2
P.O. Box
8401 Winterthur
Switzerland

www.zhaw.ch/sml

TRIPLE CROWN

