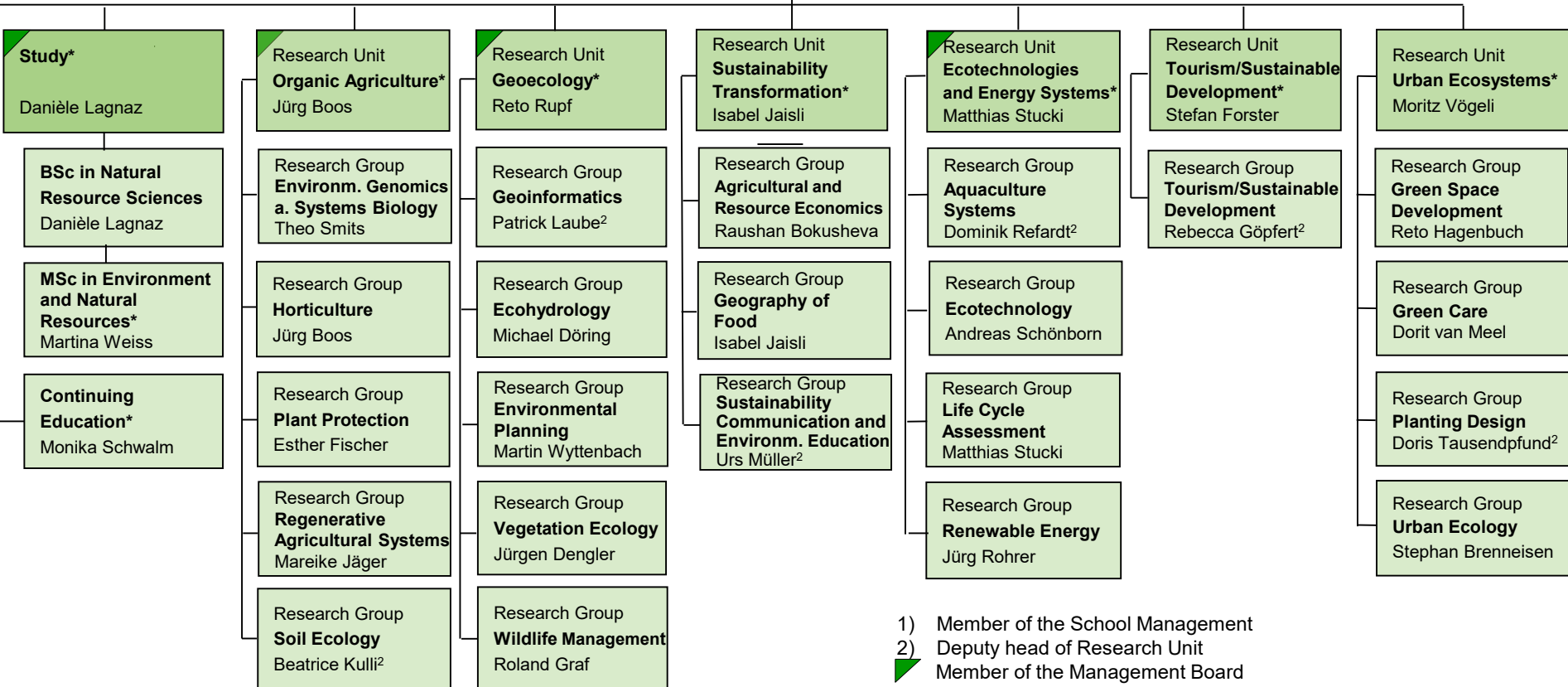


Director of Institute*
Rolf Krebs¹
Deputy Reto Rupf

Communication and Marketing*
Eva Moosbrugger

Support*
Penelope Elmiger

Teaching and Research Operations
Nils Honetschläger



1) Member of the School Management
2) Deputy head of Research Unit
Member of the Management Board
* Member of the Executive Committee