

**The ZHAW is one of the leading universities of applied sciences in Switzerland. It offers teaching, research, continuing education and other services that are both practice-oriented and science-based. ZHAW graduates are able to apply their knowledge responsibly in demanding professional fields. Research & development at the ZHAW focuses on key societal challenges. The ZHAW closely links university education and professional practice, preparing students for the labour market in a targeted manner. Together with partners, it develops practice-oriented, evidence-based solutions. It promotes personal responsibility, innovation and international collaboration.**

**With locations in Winterthur, Zurich and Wädenswil, the ZHAW is firmly anchored in its region whilst collaborating with international partners. It comprises eight Schools: Applied Linguistics, Applied Psychology, Architecture, Design and Civil Engineering, Engineering, Health Sciences, Life Sciences and Facility Management, Management and Law, and Social Work.**

## Study

The ZHAW gives students the chance to acquire the skills they need for successful careers on the national market and also in international and intercultural working environments. Using state-of-the-art teaching methods and cutting-edge technology, the ZHAW promotes a future-oriented teaching and learning culture. Thanks to the teaching staff's involvement in research activities, students constantly come into contact with new ideas; current examples from practice are incorporated into teaching, and practical projects allow students to gain an in-depth understanding of their subject. The ZHAW places a special focus not only on conveying practical and specialist competencies, but also on developing the social and personal skills essential for success in academic and professional life. Numerous degree programmes can also be studied part-time.

→ [www.zhaw.ch/study](http://www.zhaw.ch/study)

### The Bachelor's and consecutive Master's degree programmes at the ZHAW:

#### School of Applied Linguistics

- Bachelor's programmes: Communication and Media Studies, Multilingual Communication, Language and Integration
- Master's programme: Language and Communication

#### School of Applied Psychology

- Bachelor's programme: Applied Psychology
- Master's programme: Applied Psychology

#### School of Architecture, Design and Civil Engineering

- Bachelor's programmes: Architecture, Civil Engineering
- Master's programmes: Architecture, Engineering, Integrated Constructive and Energy Systems

#### School of Engineering

- Bachelor's programmes: Aviation, Computer Science, Data Science, Electrical Engineering, Energy and Environmental Engineering, Engineering and Management, Mechanical Engineering, Medical Informatics, Mobility Science, Systems Engineering
- Master's programme: Engineering

#### School of Health Sciences

- Bachelor's programmes: Health Promotion and Prevention, Midwifery, Nursing/Nursing for Registered Nurses, Occupational Therapy, Physiotherapy
- Master's programmes: Midwifery, Nursing, Occupational Therapy, Physiotherapy

#### School of Life Sciences and Facility Management

- Bachelor's programmes: Applied Digital Life Sciences, Biomedical Laboratory Diagnostics, Biotechnology, Chemistry, Facility Management, Food Science, Natural Resource Sciences
- Master's programmes: Environment and Natural Resources, Life Sciences, Prensursip for Regenerative Food Systems, Real Estate & Facility Management

#### School of Management and Law

- Bachelor's programmes: Applied Law, Business Administration, Business Information Technology, Business Law, International Management
- Master's programmes: Accounting and Controlling, Banking and Finance, Business Administration, Business Information Technology, Circular Economy Management, International Business, Management and Law

#### School of Social Work

- Bachelor's programme: Social Work
- Master's programme: Social Work

## Continuing Education

The ZHAW is the perfect partner for lifelong learning, offering a wide range of continuing education courses and programmes in all the fields of its eight Schools. Indeed, lifelong learning and personality development are the guiding principles of continuing education at the ZHAW. Acquiring practice-oriented and research-based competences allows participants to develop their skills continually at any stage in their professional careers. The wide range of programmes offered at the ZHAW includes 70 Master of Advanced Studies programmes (MAS/MBA), 392 Diploma and Certificate programmes (DAS/CAS) and many continuing education courses. Continuing education programmes at the ZHAW generally have a modular structure: smaller units are combined to make up larger units. For example, an MAS programme comprises multiple CAS programmes plus a Master's thesis. This means that participants can plan their continuing education flexibly and follow tailor-made options to meet their personal needs and aspirations. The ZHAW awards ECTS credits (according to the European Credit Transfer and Accumulation System) for successfully completed modules and now microcredentials – digitally verifiable certificates of completion – for many continuing education courses.

→ [www.zhaw.ch/continuing-education](http://www.zhaw.ch/continuing-education)

### The continuing education courses and programmes include the following subject areas:

- Accounting/Controlling
- Architecture/Urban Development/Construction
- Banking/Finance/Insurance
- Coaching/Consulting/Supervision
- Communication/Language
- Computer Science/Data Science/Engineering
- Digital Transformation
- Education/Didactics/Culture
- Facility Management/Real Estate Management
- Food/Environment/Life Sciences
- Health
- Health Care Management
- Law
- Leadership/Human Resource Management
- Management/Business/Administration
- Marketing/Communication/Media
- Psychology/Psychotherapy
- Social Work

## Research and Development/Consultancy and Services

The ZHAW focuses its research and development activities on key economic and social challenges. As one of the biggest multidisciplinary universities of applied sciences in Switzerland, it brings together a broad spectrum of disciplines and wide-ranging expertise under one roof. ZHAW researchers develop innovative solutions that can be successfully implemented in practice. Working together with companies, the public sector, Innosuisse, the Swiss National Science Foundation and other foundations and as part of other European and global partnerships, such as the present collaboration within the framework of Horizon Europe, they conduct several hundred projects each year with a total volume of 184 million Swiss francs. Through practice-oriented skills development for students and diverse opportunities to

collaborate with industry – from contract research and business services to long-term development partnerships – combined with a clear focus on applied solutions, the ZHAW makes a tangible contribution to the sustainable development of society and the economy. In addition, the ZHAW attaches great importance to the transfer and application of research findings, and is committed to promoting open research data, supporting early-stage researchers and fostering entrepreneurial thinking. The ZHAW's strong local roots in the greater Zurich region and its extensive international network complete its research profile.

→ [www.zhaw.ch/research](http://www.zhaw.ch/research)

## International

The ZHAW enables students to strengthen their international profile and hone their capacity for intercultural communication and collaboration. Language skills and intercultural education are important prerequisites for operating in a globalised society, economy and scientific community. For this reason, the ZHAW has three levels of international orientation and connectedness: the German-speaking regions, Europe and the globe. This is reflected, for instance, in internationally-oriented degrees as well as joint and double degree programmes. More and more students spend some time studying or doing an internship abroad, both in European countries and on other continents. The ZHAW currently has 535

partnership agreements with universities in 63 countries. The ZHAW also supports its employees when it comes to spending time abroad, helping and challenging them to network with peers from all over the world. It is strongly involved in European programmes and active within international networks of industry and university partners doing research on current issues. In 2023, the ZHAW has become a member of the European Engineering Learning Innovation and Science Alliance (EELISA).

→ [www.zhaw.ch/en/international](http://www.zhaw.ch/en/international)

## Transformative, entrepreneurial and European

Thanks to its close integration of university education and professional practice, the ZHAW creates a dynamic environment in which students are prepared in a target manner for the demands of a constantly changing labour market. Together with national and international partners from the worlds of research and practice, staff and students develop, test and evaluate evidence-based solutions – both in real and simulated contexts. This exchange fosters not only subject-specific excellence but also the ability to solve complex problems responsibly and sustainably.

The ZHAW attaches great importance to promoting open-minded, proactive and entrepreneurial thinking. Students and staff are

empowered to take on personal responsibility and actively open up new opportunities for action. At the same time, the university continually evolves and strengthens its role as a learning organisation. By expanding European cooperation and global networks, the ZHAW consolidates its position in the international higher education landscape. This benefits all participants by providing a wide range of specialist insights and intercultural perspectives.

→ [www.zhaw.ch/strategy](http://www.zhaw.ch/strategy)

### Imprint

Publication: ZHAW Zurich University of Applied Sciences  
Editing: Corporate Communications | Layout and Concept: Büro4, Zurich  
Winterthur, April 2026



5,436 ←  
first-year students

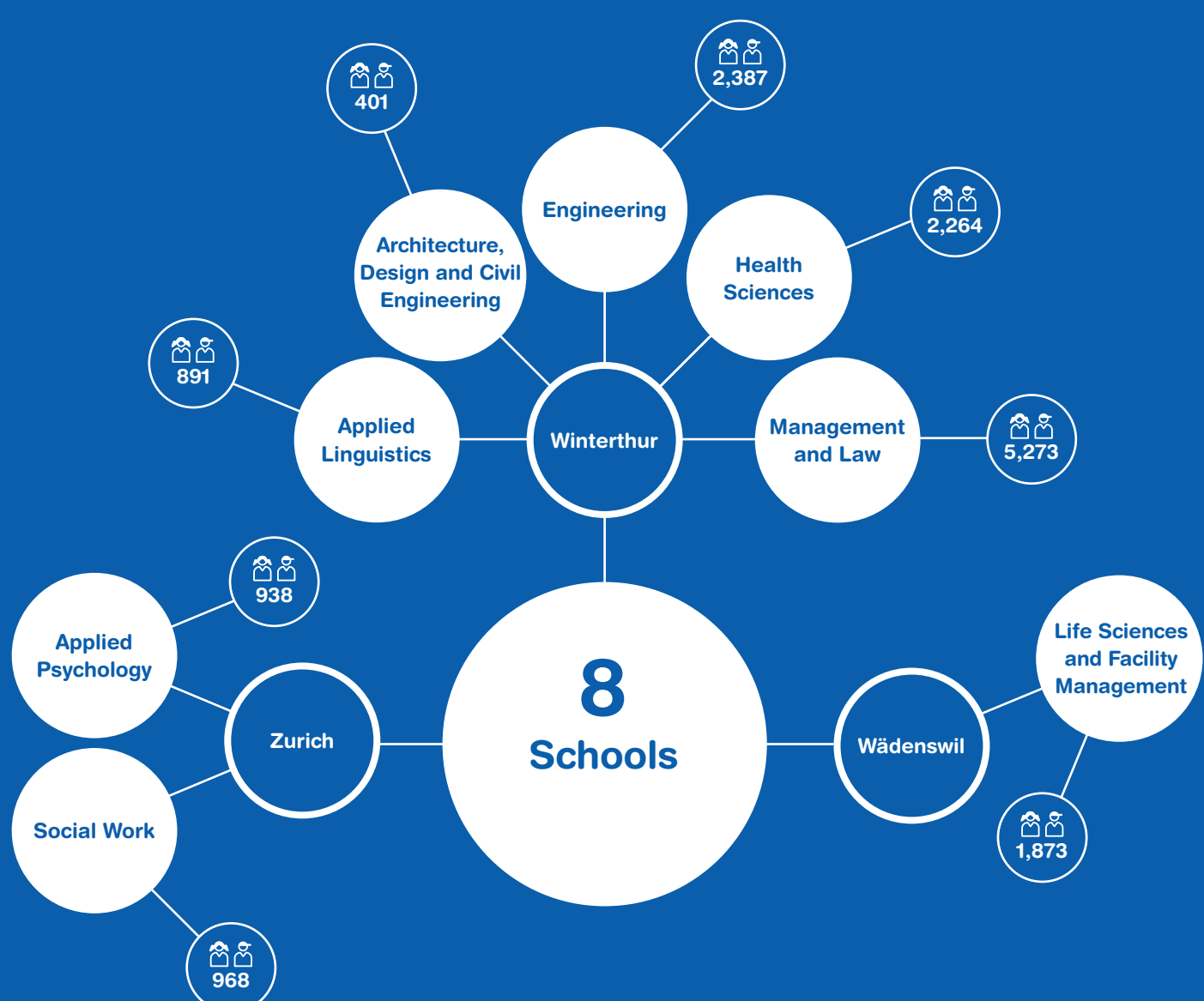
14,995  
students

→ 8,203  
proportion of women (54.7%)

3,757  
graduates

↓ 12,086  
undergraduate students

↘ 2,909  
postgraduate students



499  
research assistants

↑ 1,817  
lecturers and research associates

↗ 251  
professors



3,729  
employees

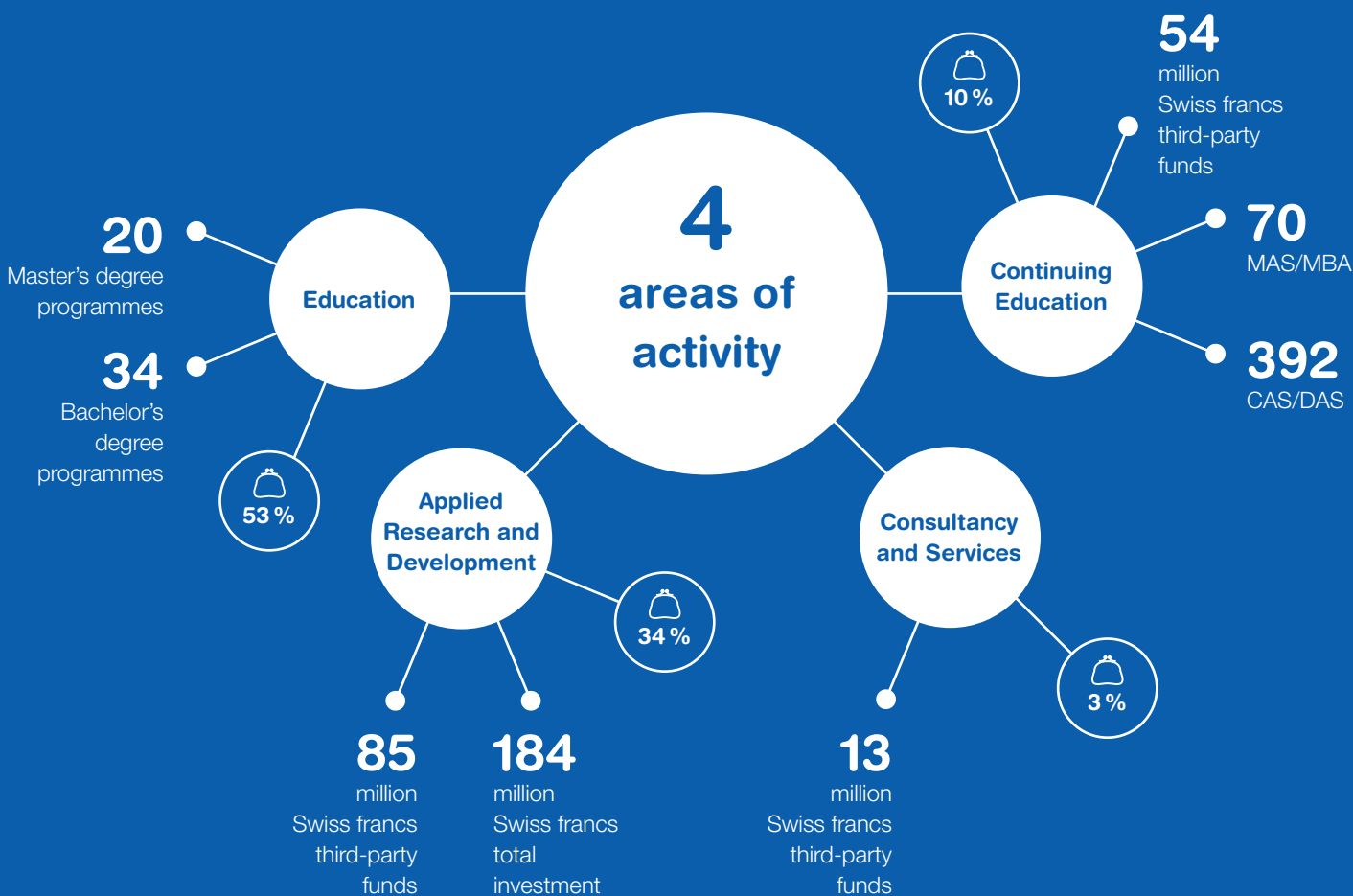
← 1,162  
administrative and technical staff



international

↙ 535  
partner universities

↓ 63  
countries



597  
million Swiss francs  
total investment

→ 76.3  
per cent  
personnel costs

↓ 16.4  
per cent material  
and other costs

↘ 7.3  
per cent  
property costs

Zurich University of Applied Sciences

**President's Office**

Gertrudstrasse 15  
P.O. Box  
CH-8401 Winterthur  
Switzerland

Phone +41 58 934 71 71  
info@zhaw.ch  
www.zhaw.ch

Follow us:

