

**The ZHAW is one of the leading universities of applied sciences in Switzerland. It offers teaching, research, continuing education and other services that are both practice-oriented and science-based. ZHAW graduates are able to apply their knowledge responsibly in demanding professional fields. Research & development at the ZHAW focuses on key societal challenges, with a particular emphasis on energy and societal integration. With its expertise in sustainable development and digital transformation, the ZHAW imparts forward-looking knowledge and takes an active part in shaping the digital and ecological transformation. With locations in Winterthur, Zurich and Wädenswil, the ZHAW is firmly anchored in its region whilst collaborating with international partners. It comprises eight Schools: Applied Linguistics, Applied Psychology, Architecture, Design and Civil Engineering, Engineering, Health Professions, Life Sciences and Facility Management, Management and Law, and Social Work.**

## Study

The ZHAW gives students the chance to acquire the skills they need for successful careers on the national market and also in international and intercultural working environments. Using state-of-the-art teaching methods and cutting-edge technology, the ZHAW promotes a future-oriented teaching and learning culture. Thanks to the teaching staff's involvement in research activities, students constantly come into contact with new ideas; current examples from practice are incorporated into teaching, and practical projects allow students to gain an in-depth understanding of their subject. The ZHAW places a special focus not only on conveying practical and specialist competencies, but also on developing the social and personal skills essential for success in academic and professional life. Numerous degree programmes can also be studied part-time.

→ [www.zhaw.ch/en/study](http://www.zhaw.ch/en/study)

### The Bachelor's and consecutive Master's degree programmes at the ZHAW:

#### School of Applied Linguistics

- Bachelor's programmes: Applied Languages, Communication, Language and Integration
- Master's programme: Applied Linguistics

#### School of Applied Psychology

- Bachelor's programme: Applied Psychology
- Master's programme: Applied Psychology

#### School of Architecture, Design and Civil Engineering

- Bachelor's programmes: Architecture, Civil Engineering
- Master's programmes: Architecture, Civil Engineering

#### School of Engineering

- Bachelor's programmes: Aviation, Computer Science, Data Science, Electrical Engineering, Energy and Environmental Engineering, Engineering and Management, Mechanical Engineering, Systems Engineering, Transportation Systems
- Master's programme: Engineering

#### School of Health Professions

- Bachelor's programmes: Health Promotion and Prevention, Midwifery, Nursing, Occupational Therapy, Physiotherapy
- Master's programmes: Midwifery, Nursing, Occupational Therapy, Physiotherapy

#### School of Life Sciences and Facility Management

- Bachelor's programmes: Applied Digital Life Sciences, Biomedical Laboratory Diagnostics, Biotechnology, Chemistry, Environmental Engineering, Facility Management, Food Technology
- Master's programmes: Environment and Natural Resources, Life Sciences, Preneurship for Regenerative Food Systems, Real Estate and Facility Management

#### School of Management and Law

- Bachelor's programmes: Applied Law, Business Administration, Business Information Technology, Business Law, International Management
- Master's programmes: Accounting & Controlling, Banking and Finance, Business Administration, Business Information Technology, International Business, Management and Law

#### School of Social Work

- Bachelor's programme: Social Work
- Master's programme: Social Work

## Continuing Education

The ZHAW is the perfect partner for lifelong learning, offering a wide range of continuing education courses and programmes in all the fields of its eight Schools. Indeed, lifelong learning and personality development are the guiding principles of continuing education at the ZHAW. Acquiring practice-oriented and research-based competences allows participants to develop their skills continually at any stage in their professional careers. The wide range of programmes offered at the ZHAW includes approximately 60 Master of Advanced Studies programmes (MAS/EMBA/MBA), around 320 Diploma and Certificate programmes (DAS/CAS) and many continuing education courses. Continuing education programmes at the ZHAW generally have a modular structure: smaller units are combined to make up larger units. For example, an MAS programme comprises multiple CAS programmes plus a Master's thesis. This means that participants can plan their continuing education flexibly and follow tailor-made options to meet their personal needs and aspirations. For successfully completed modules, the ZHAW awards credits in accordance with the European Credit Transfer and Accumulation System (ECTS).

→ [www.zhaw.ch/en/continuing-education](http://www.zhaw.ch/en/continuing-education)

### The continuing education courses and programmes include the following subject areas:

- Accounting/Controlling
- Architecture/Urban Development/Construction
- Banking/Finance/Insurance
- Education/Didactics/Culture
- Coaching/Consulting/Supervision
- Digital Transformation
- Facility Management/Real Estate Management
- Health/Nursing
- Health Care Management
- Computer Science/Data Science/Engineering
- Communication/Language
- Leadership/Human Resource Management
- Food/Environment/Life Sciences
- Management/Business/Administration
- Marketing/Communication/Media
- Psychology/Psychotherapy
- Law
- Social Work

## Research and Development/Consultancy and Services

As one of Switzerland's largest multidisciplinary universities of applied sciences, the ZHAW brings together under one roof many different disciplines and a wide range of specialist knowledge. ZHAW researchers develop groundbreaking innovations that can be successfully implemented in practice. Together with industry partners, they carry out several hundred projects each year, with a total funding of about 149 million Swiss francs. The ZHAW offers different forms of collaboration to serve different needs: student projects and theses, research contracts and services, and long-term research and development projects. The ZHAW is one of the most active universities of applied sciences, in both a national and international comparison, as regards participation in EU research projects.

The research profile of the ZHAW is characterised by two strategic focal points: energy and societal integration. The ZHAW is reacting to the huge challenge of the energy turnaround by bundling competences in energy research areas. This demands the interaction of various disciplines, since long-term security of supply involves not only technical and economic, but also socio-cultural and legal challenges. Through its research in societal integration, the ZHAW seeks to contribute to the strengthening of integration on the social, economic, cultural and political levels. In both of these key areas, the focus is on interdisciplinary research and social, organisational and technological innovation.

→ [www.zhaw.ch/en/research](http://www.zhaw.ch/en/research)

## International

The ZHAW enables students to strengthen their international profile and hone their capacity for intercultural communication and collaboration. Language skills and intercultural awareness are important prerequisites for operating in a globalised society, economy and scientific community. For this reason, the ZHAW has three levels of international orientation and connectedness: the German-speaking regions, Europe and the globe. This is reflected, for instance, in internationally-oriented degree programmes and

double degrees. More and more students spend some time studying or doing an internship abroad, both in European countries and on other continents. The ZHAW currently has 491 partnership agreements with universities in 61 countries. It is strongly involved in the European funding programmes and active within international networks of industry and university partners doing research on current issues.

→ [www.zhaw.ch/en/international](http://www.zhaw.ch/en/international)

## Digital and sustainable

With its strategic initiative "ZHAW digital", the ZHAW addresses the dynamic changes involved in the digital transformation. The goal is to take an active part in shaping the digital transformation by pooling expertise in education and research, and by creating encouraging framework conditions: the ZHAW produces digitally competent graduates, conducts research to address the challenges of the digital transformation, and helps to shape public discourse. With its sustainability strategy, the ZHAW takes its share of societal

responsibility and contributes to overcoming ecological, economic and social challenges in a way that is responsible and well thought out. Students are provided with the tools to promote the preservation of our natural resources. Through research, the ZHAW generates (practical) knowledge for sustainable development. It pools findings, harnesses synergies and acts as a living laboratory for sustainable developments.

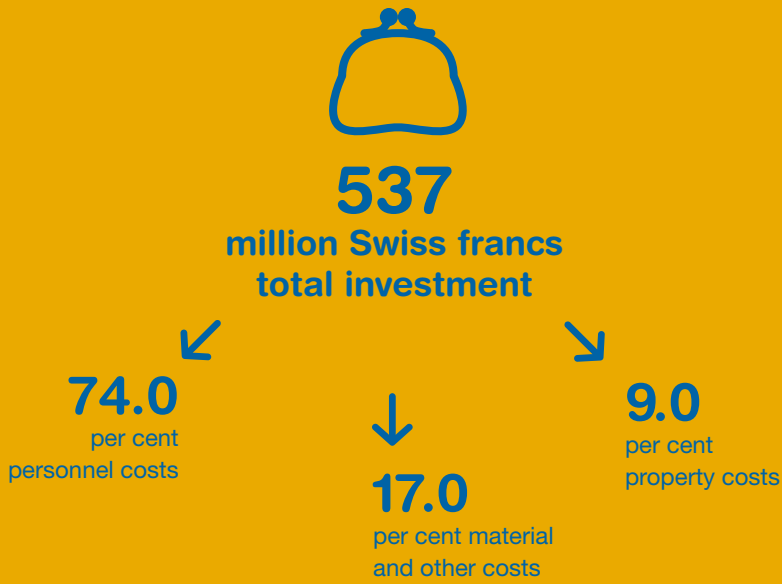
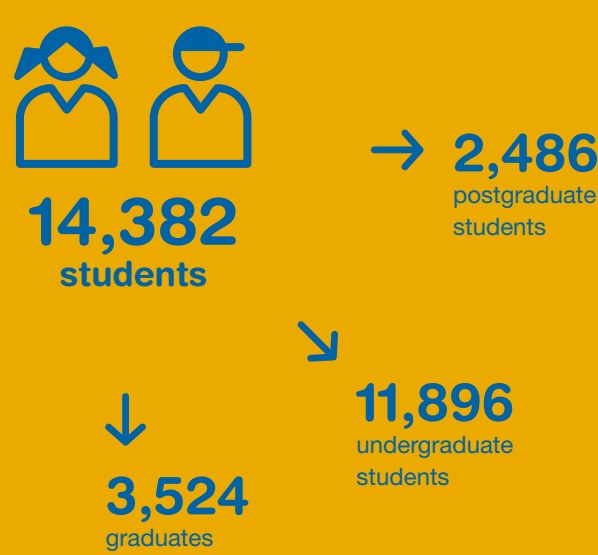
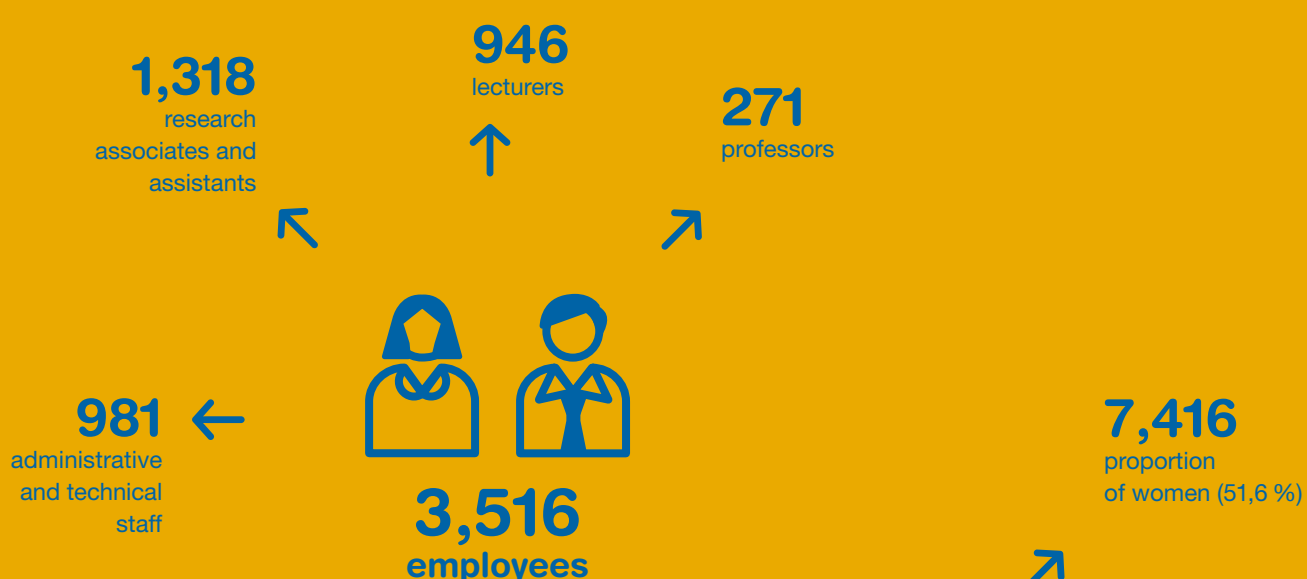


international

491 partner universities

61 countries

5 continents



Data based on ZHAW annual report 2021

Zurich University of Applied Sciences

**President's Office**

Gertrudstrasse 15  
P.O. Box  
CH-8401 Winterthur  
Switzerland

Phone +41 58 934 71 71  
info@zhaw.ch  
www.zhaw.ch

Follow us:

