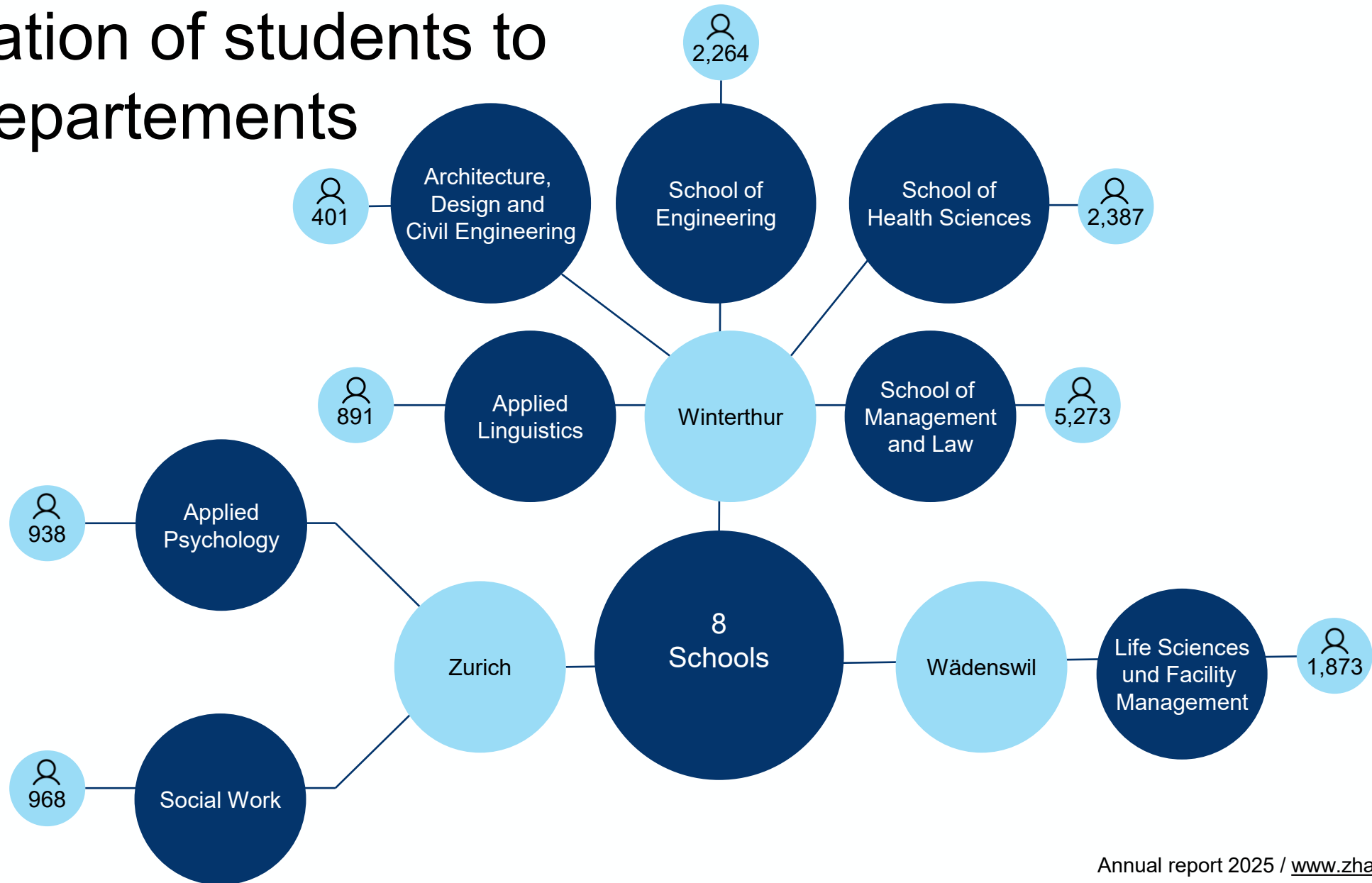
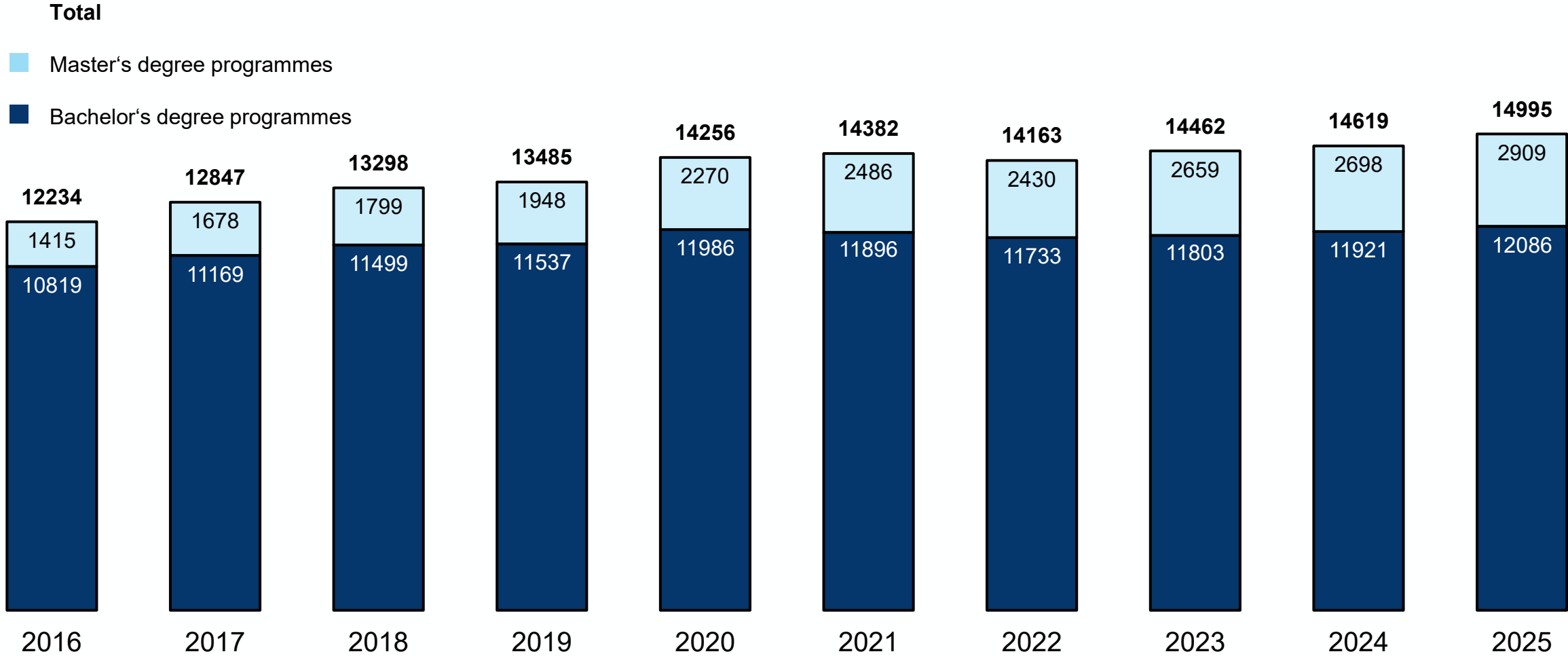


# Allocation of students to the departments

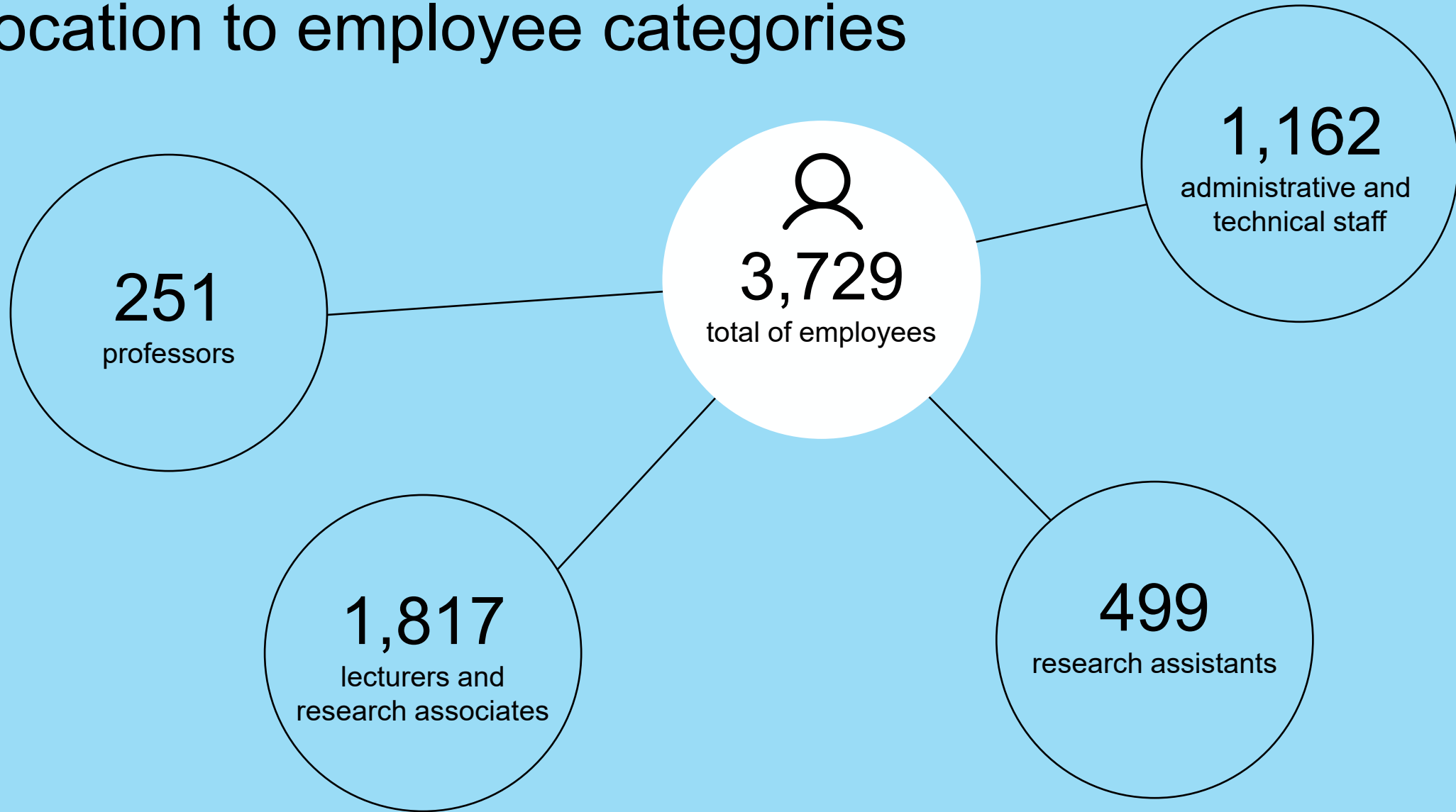


# Development of student numbers

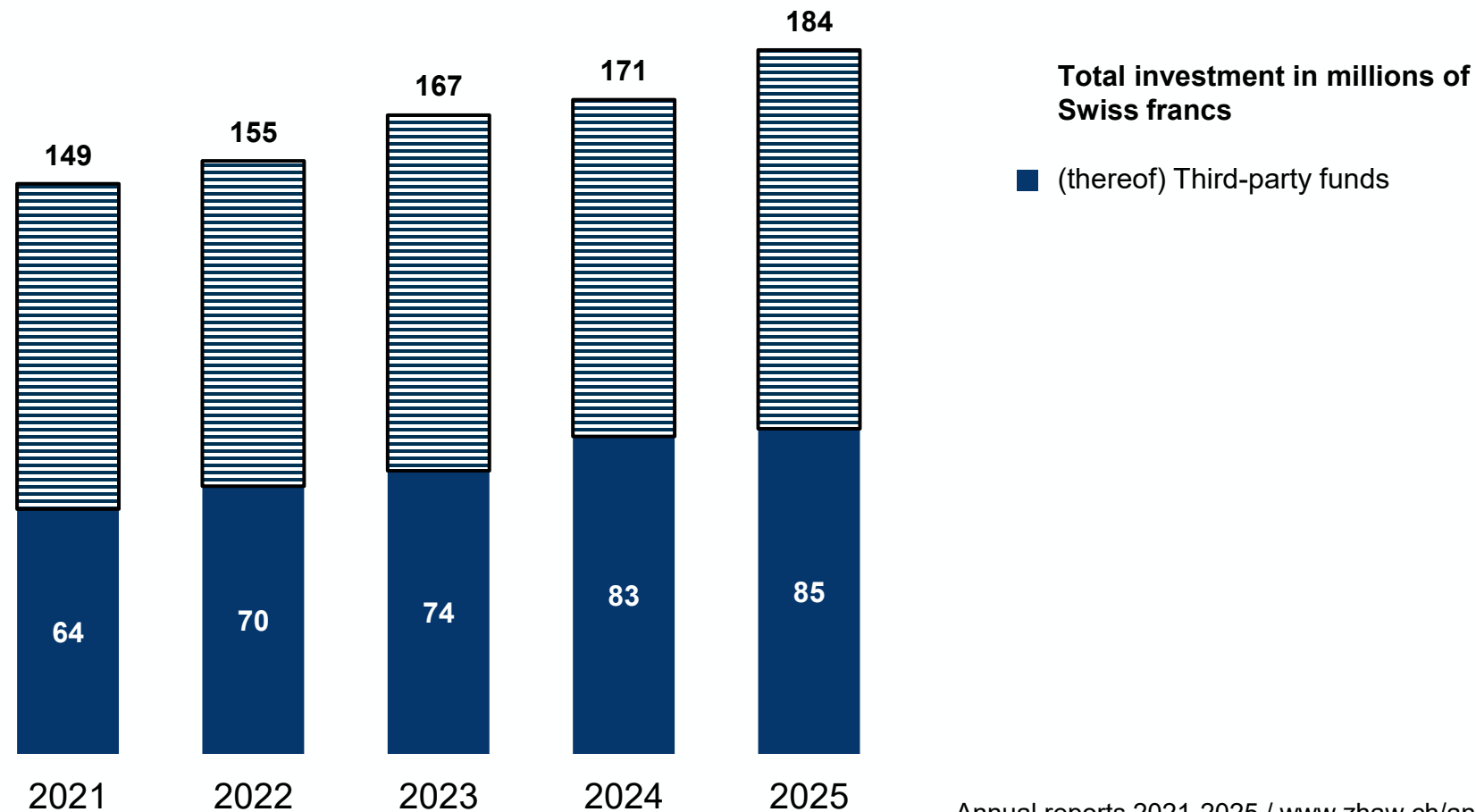


As of 15 October, of each year.  
Annual reports 2016-2025 / [www.zhaw.ch/annualreport](http://www.zhaw.ch/annualreport)

# Allocation to employee categories



# Development of total investment in research and development



Annual reports 2021-2025 / [www.zhaw.ch/annualreport](http://www.zhaw.ch/annualreport)