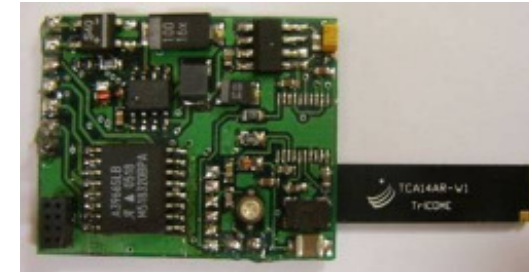




Stellwerk

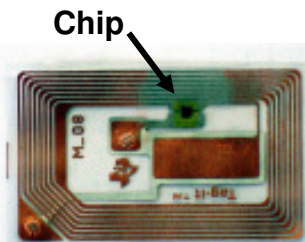
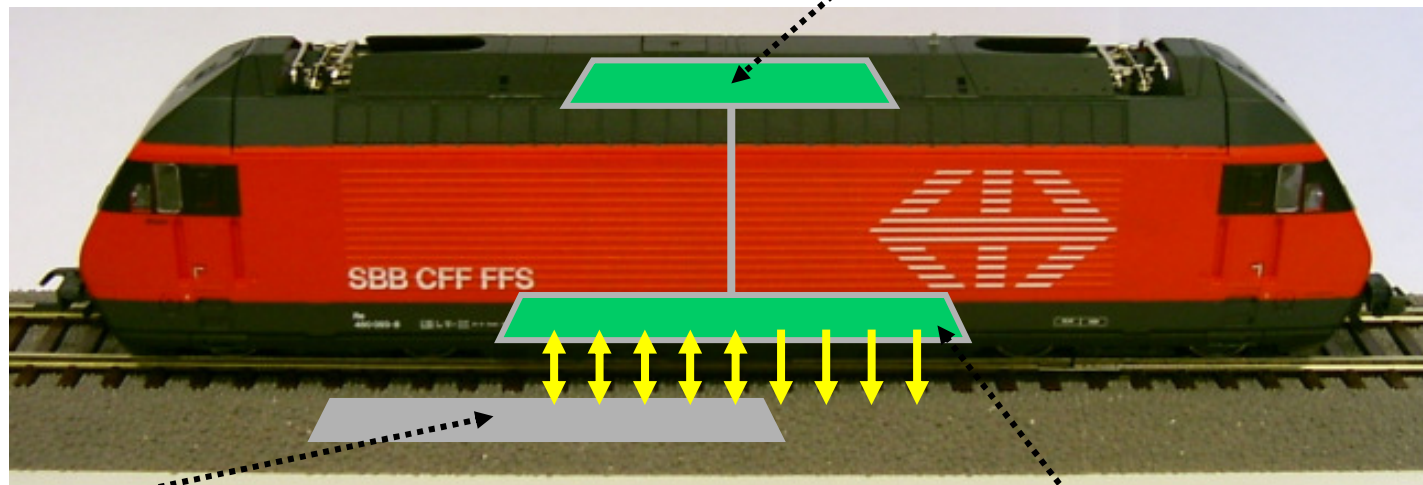
4 Stellwerk steuert per Funk

Funkmodul & RFID-Reader
(oben in der Lok)



Lok sendet TAG-ID = Position
(Kurzstanz-Funk, 868 MHz)

3



RFID-TAG

(passiv, unter der Schiene
Standard ISO 15693)

1 RFID-Reader regt TAG an
(induktiv, 13.56 MHz)

2 TAG sendet ID zurück



RFID-Reader-Antenne
(unten an der Lok)