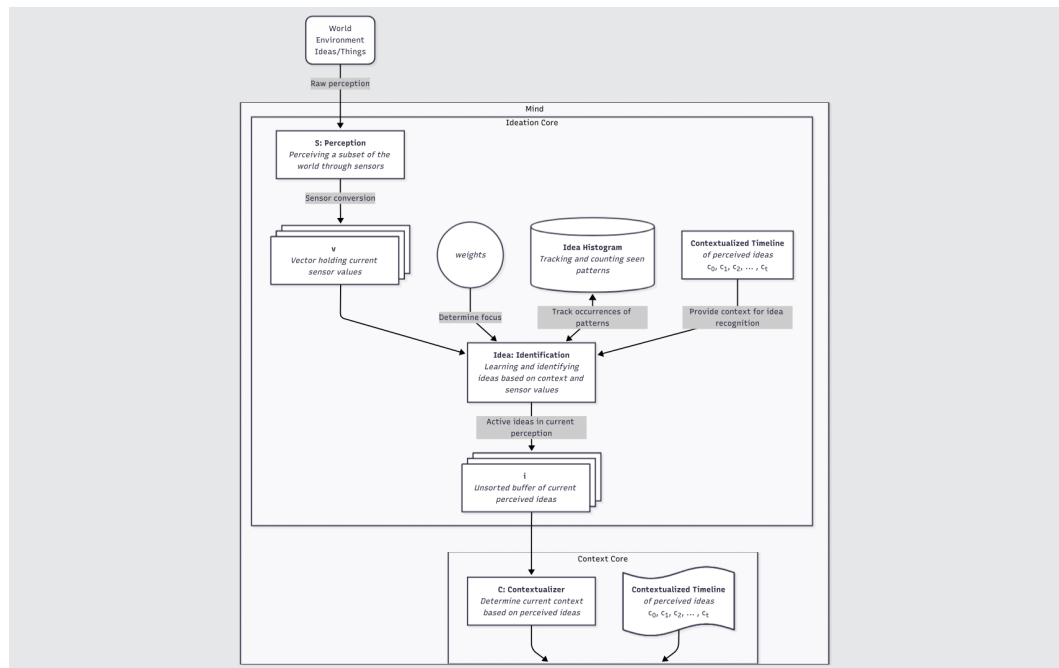


Artificial Perception Reimagined: A Berkeley-Inspired AI Perception Framework



- A Novel Self-Contained Empiricist Architecture: Heuristic Observation, Learning, and Discovery (HOLD) Framework
- Autonomous Hierarchical Learning: Complex, multi-layered understanding
- High Abstraction & Predictive Capabilities: From sensory ideas to temporal world models
- Complementary to State-of-the-Art ML Solutions: Not designed to replace but to encompass
- Regulatory-Compliant Accountability: Addressing the demand for accountable, traceable, and transparent AI

