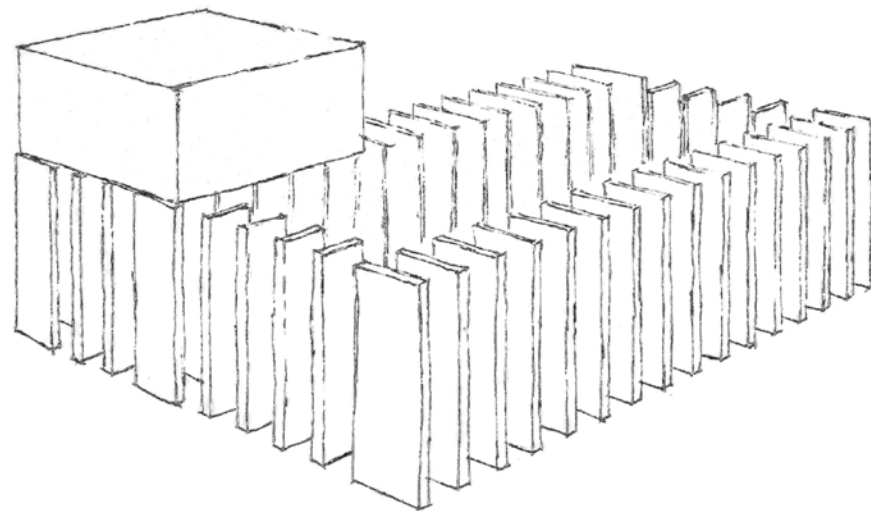
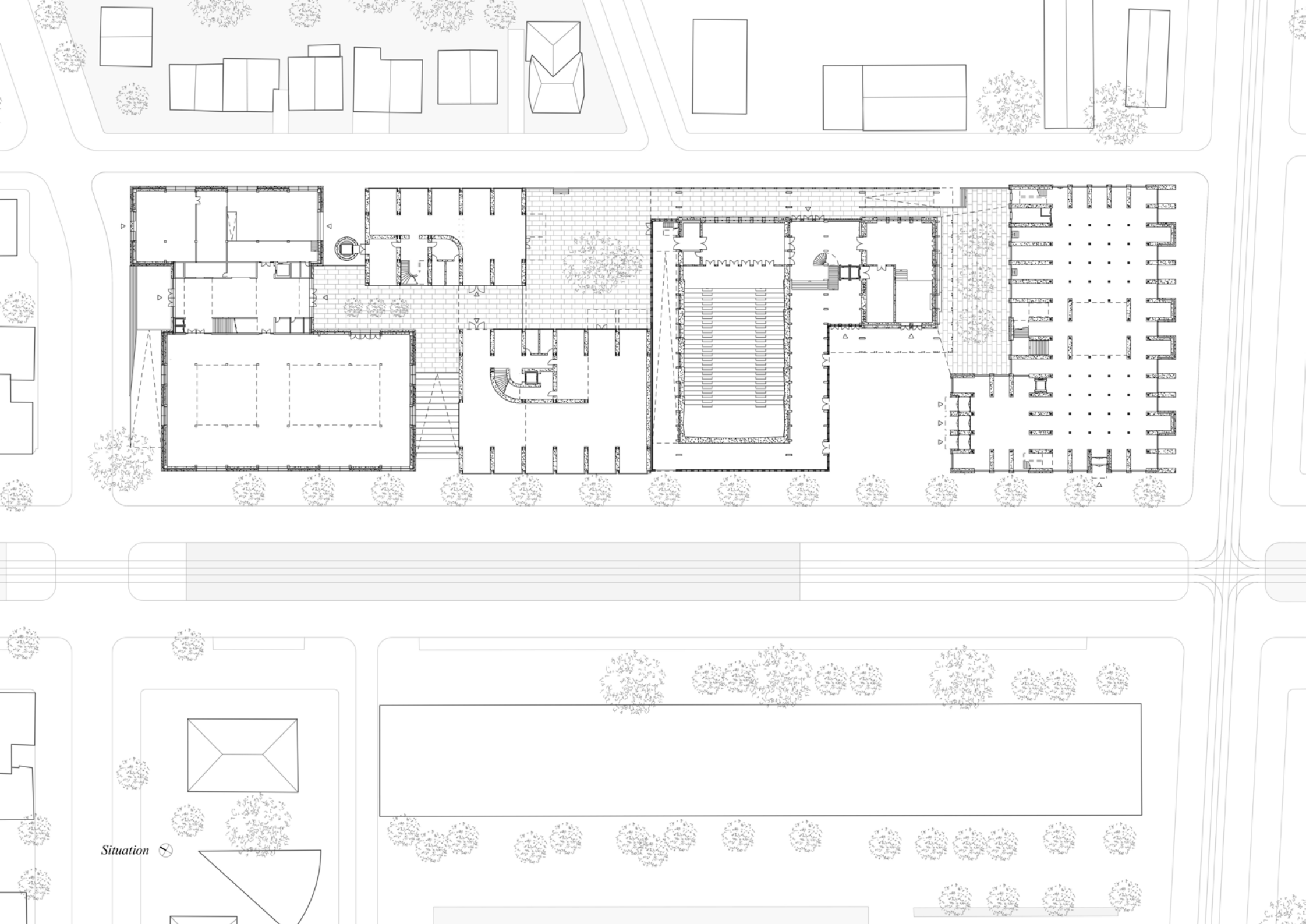


Campus "Etats-Unis" _ Bibliothek

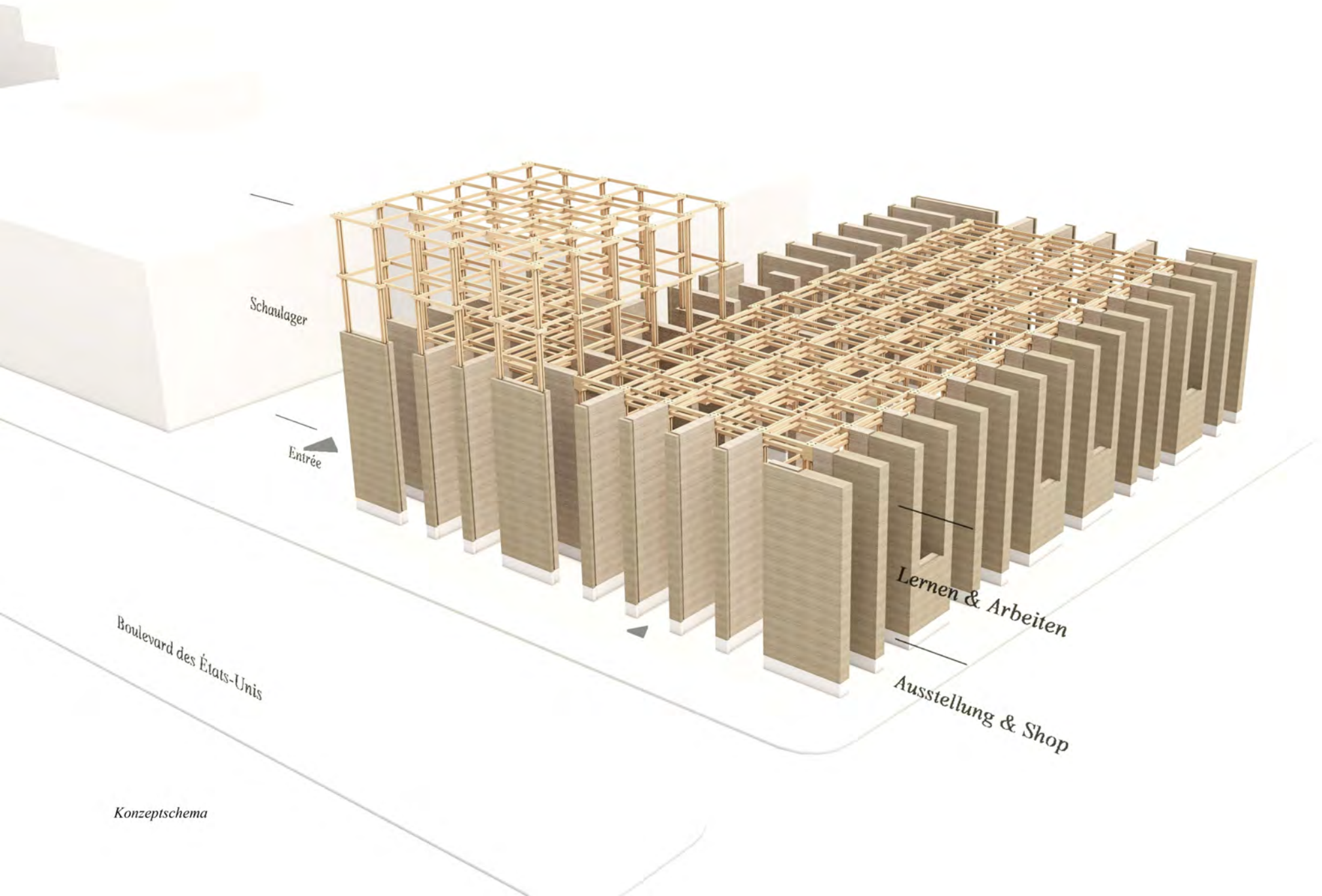
Entwerfen & Konstruieren _ Frühlingssemester 2020





Situation





Schaulager

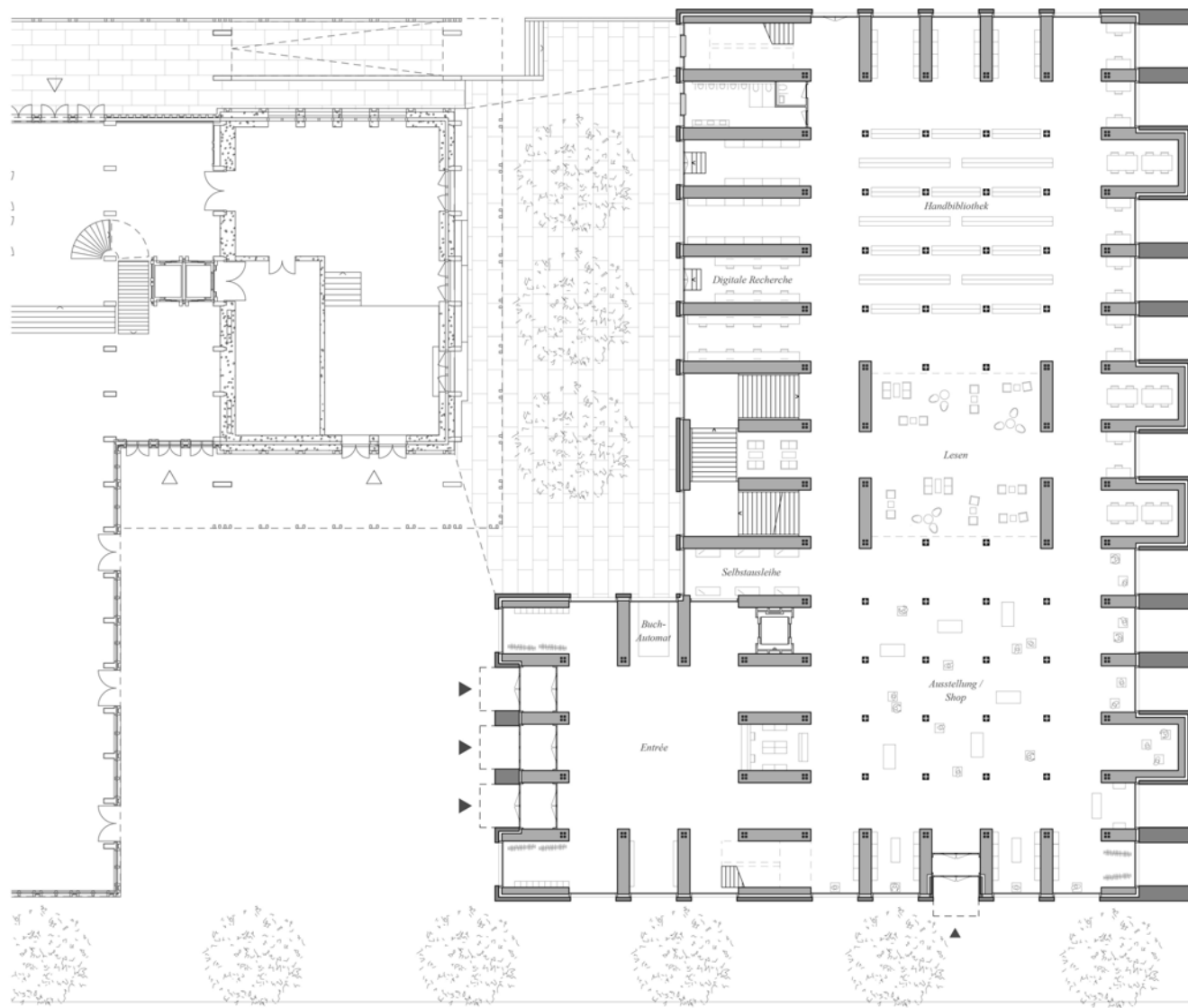
Entrée

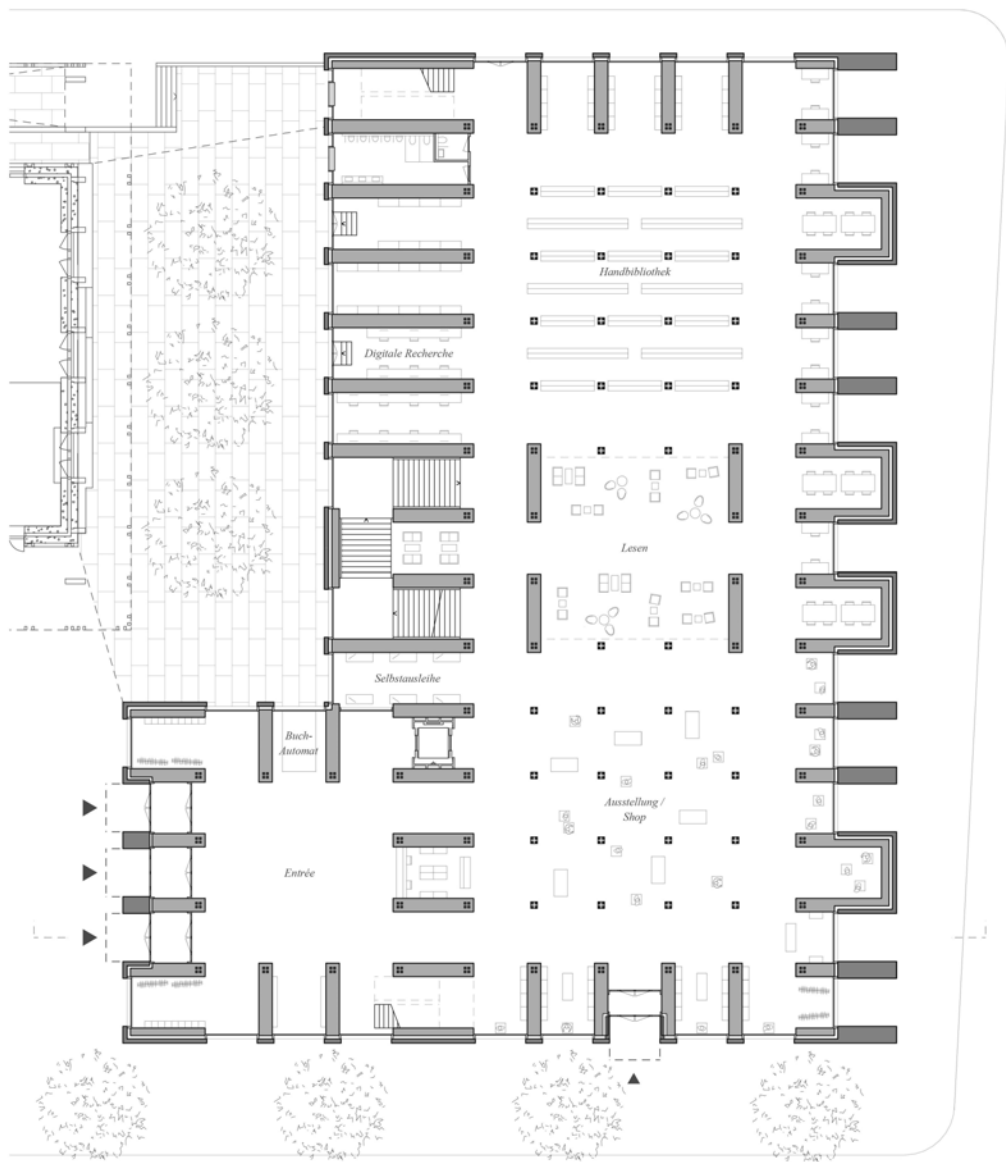
Boulevard des États-Unis

Lernen & Arbeiten

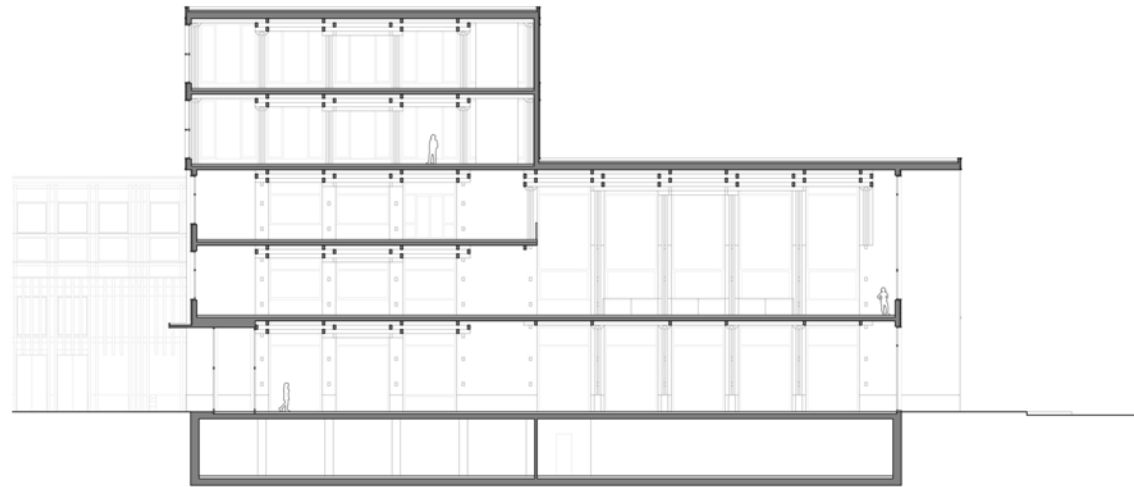
Ausstellung & Shop

Konzeptschema

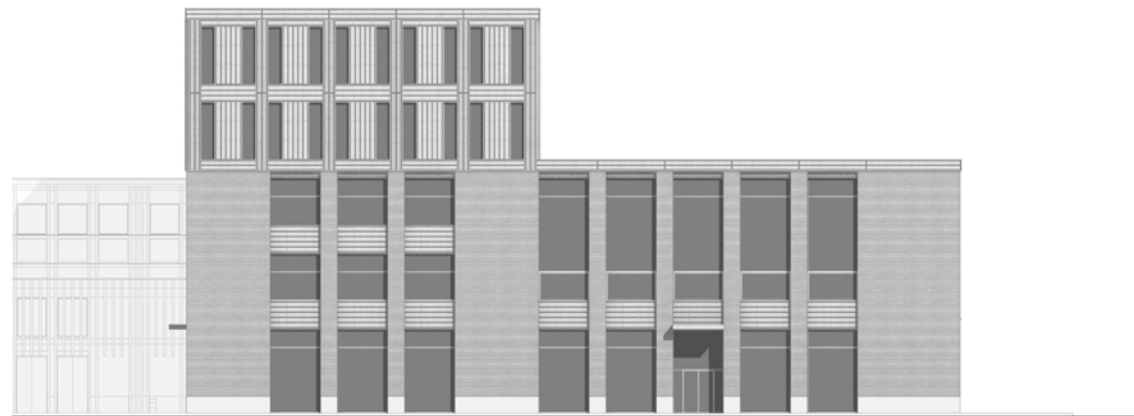




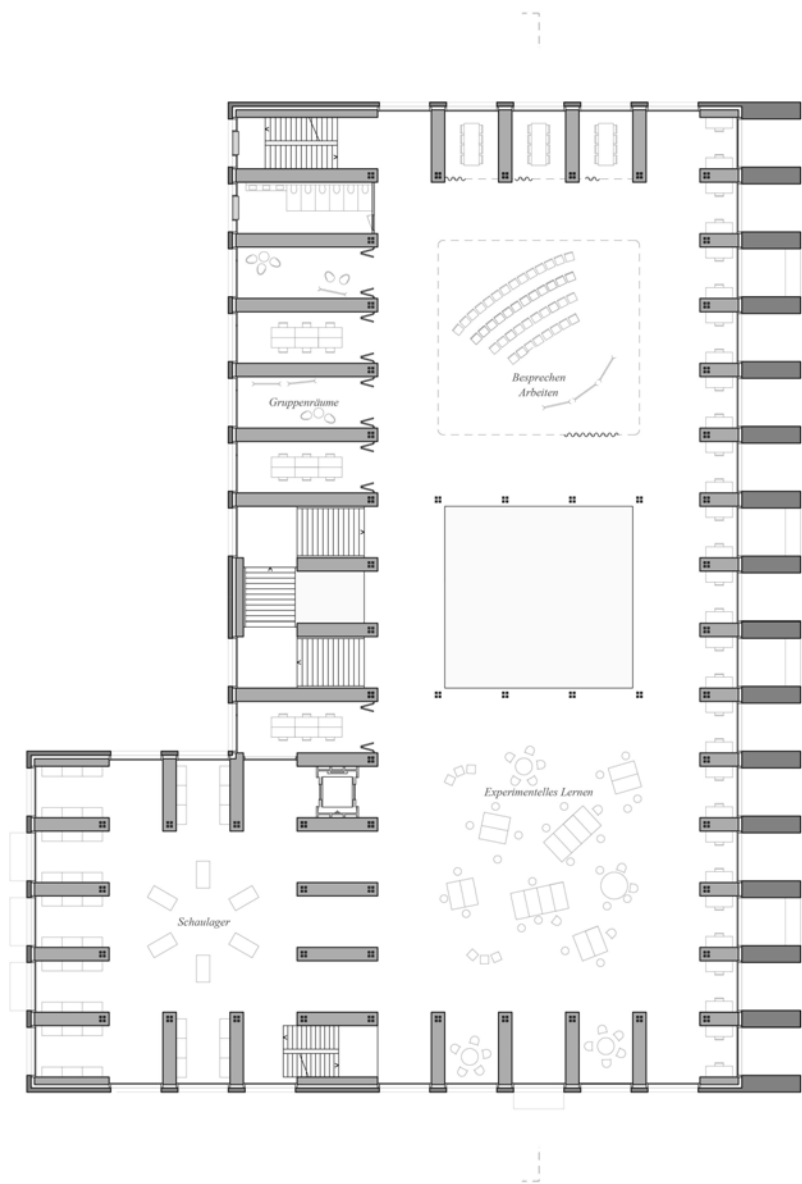
Erdgeschoss 




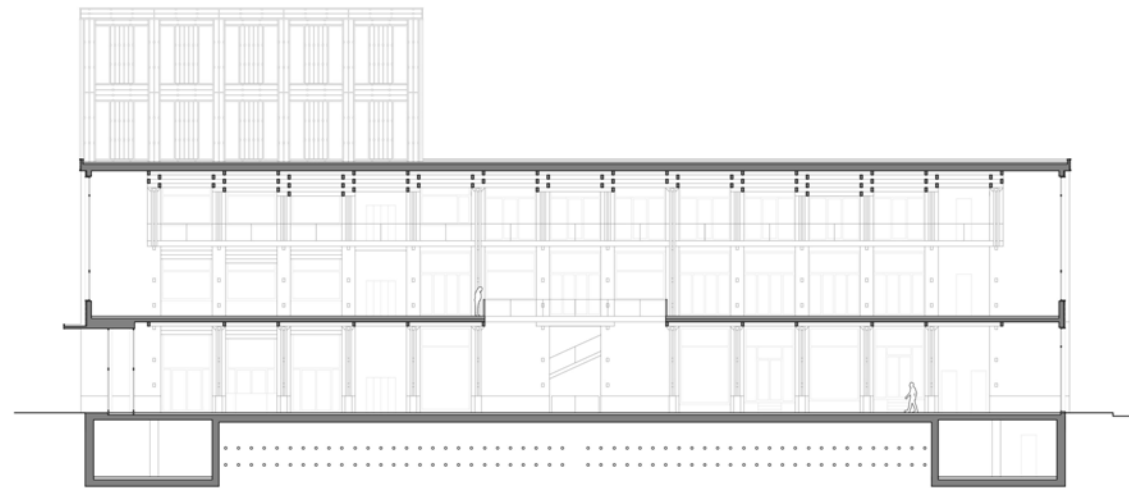
Querschnitt



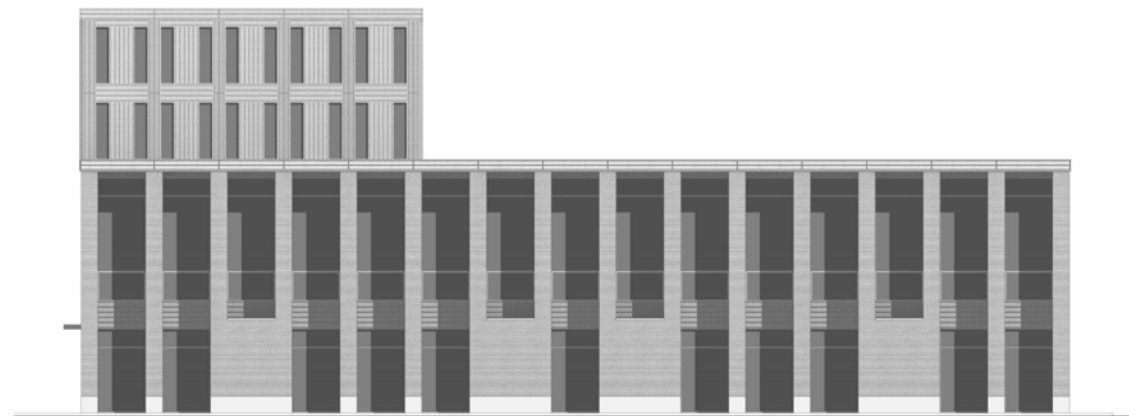
Fassade Süd-West (Boulevard)



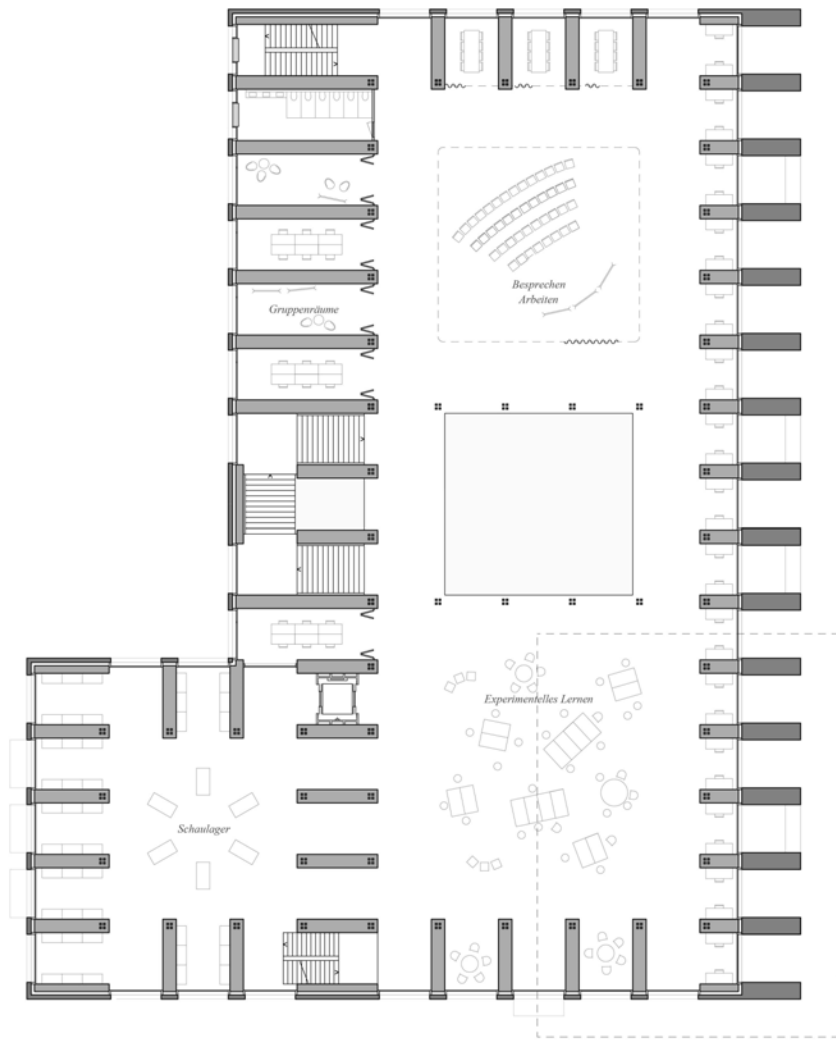
1. Obergeschoss 




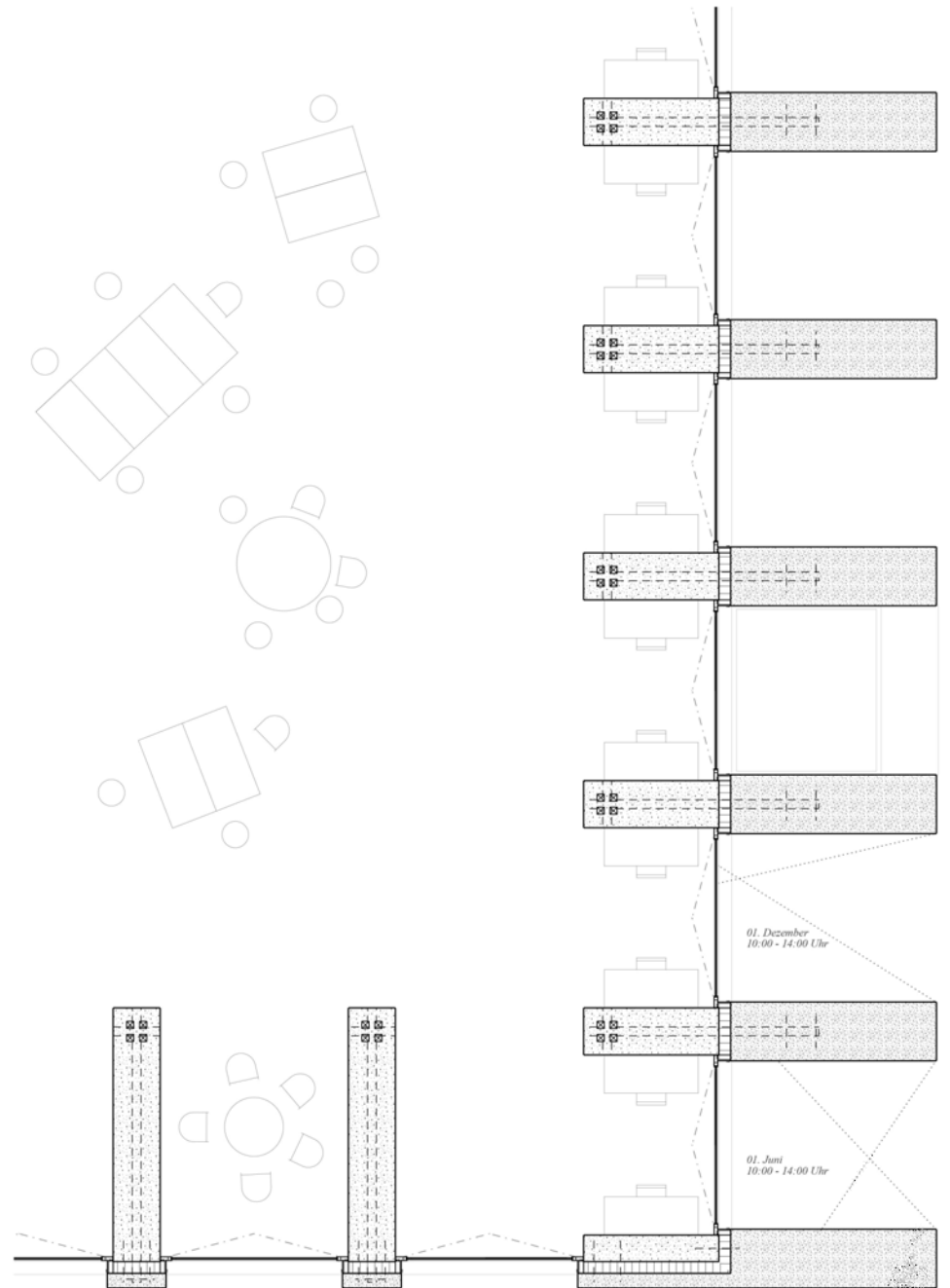
Längsschnitt

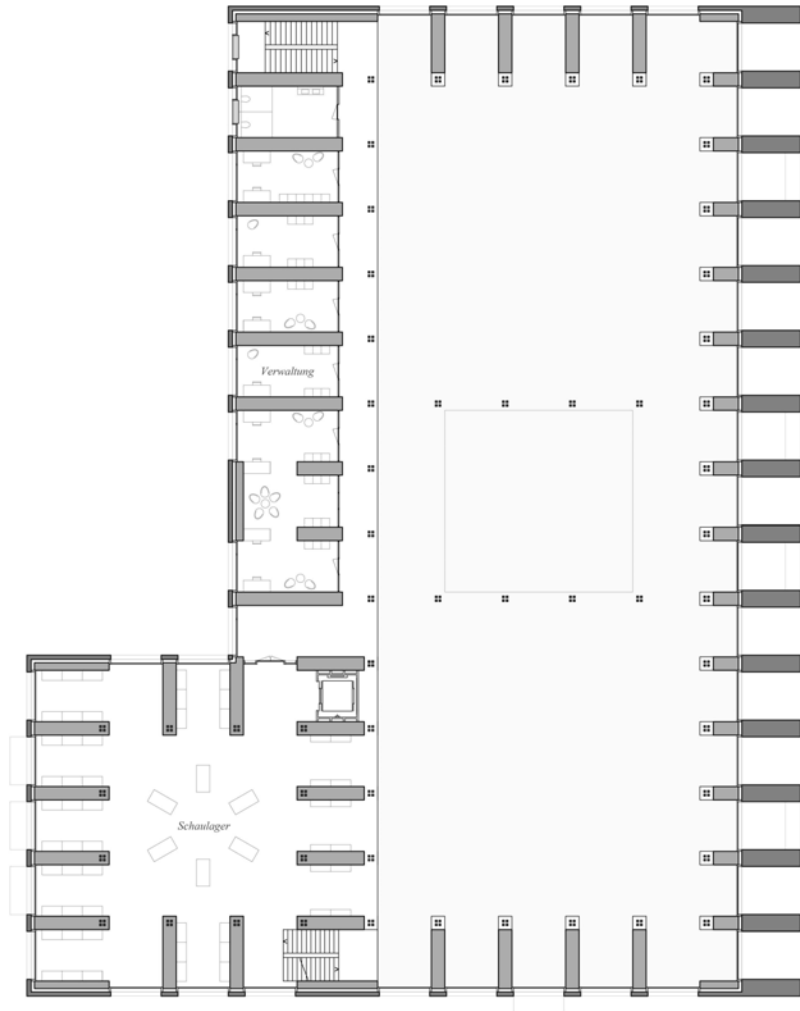


Fassade Süd-Ost

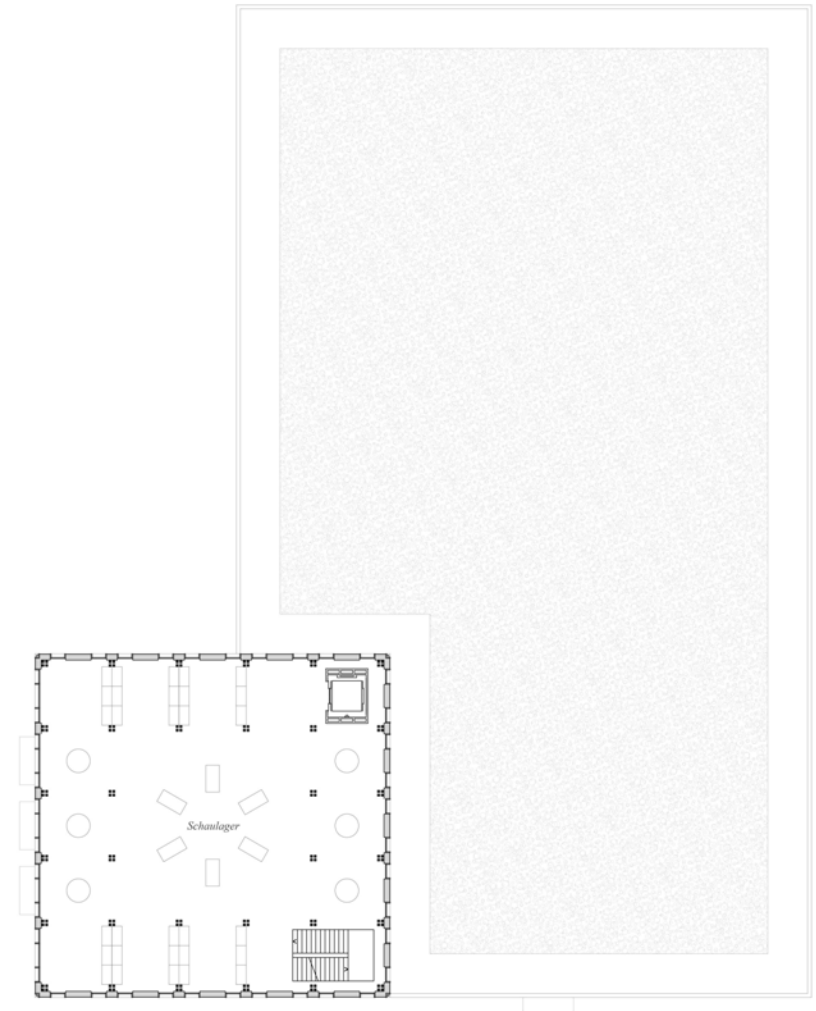


1. Obergeschoss 

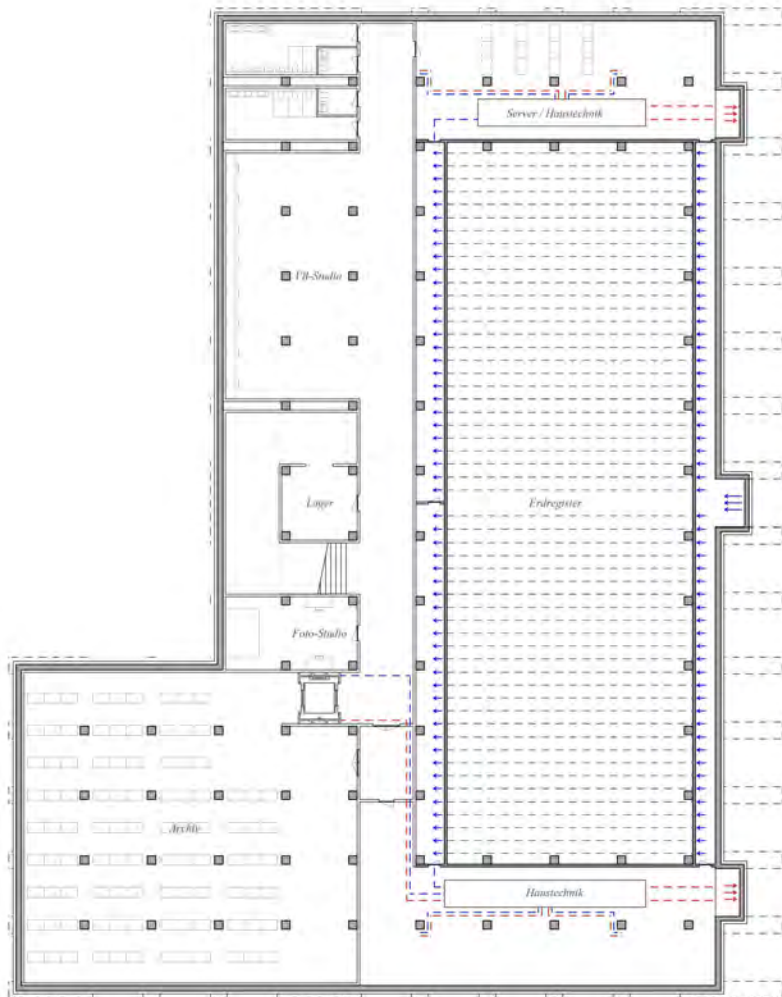




2. Obergeschoss



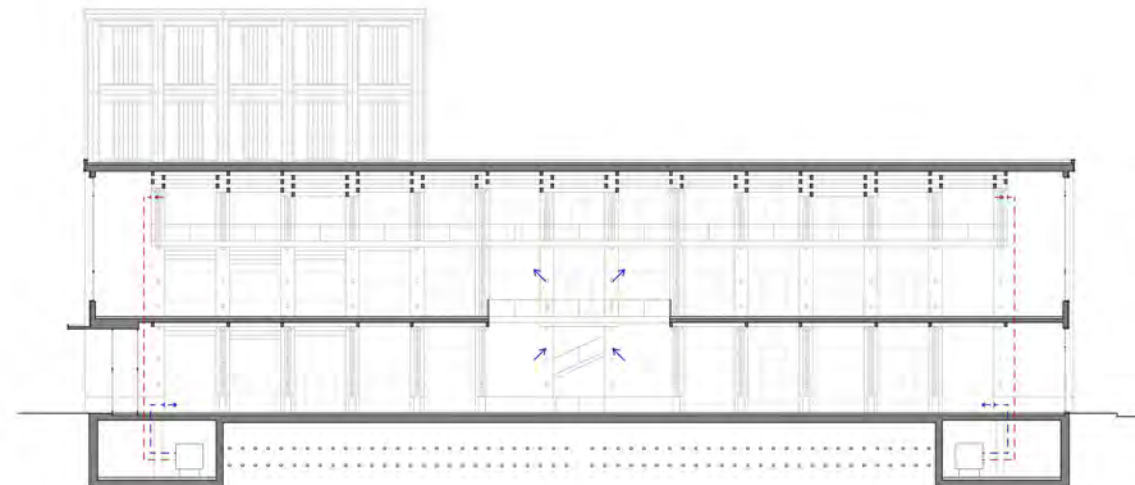
3. & 4. Obergeschoss



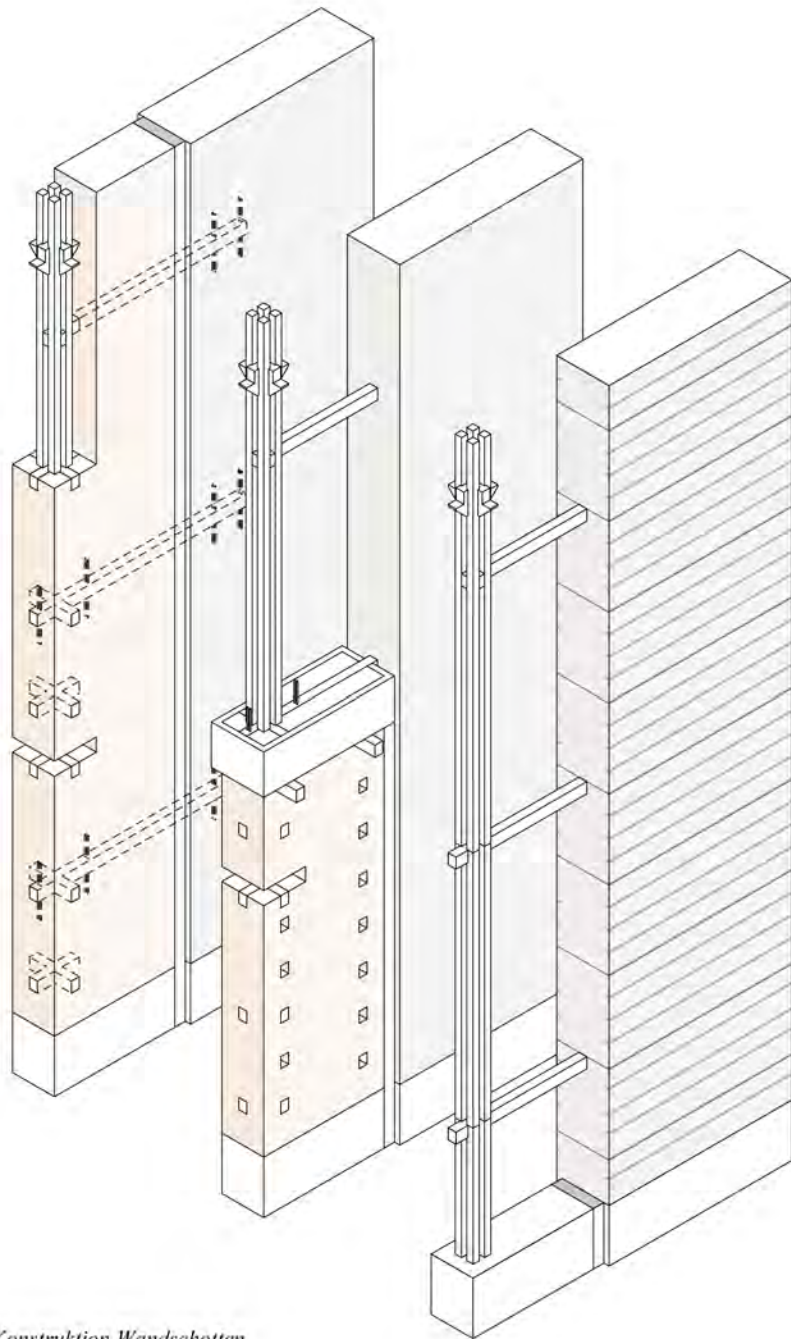
Untergeschoss ⊗
 Haustechnik



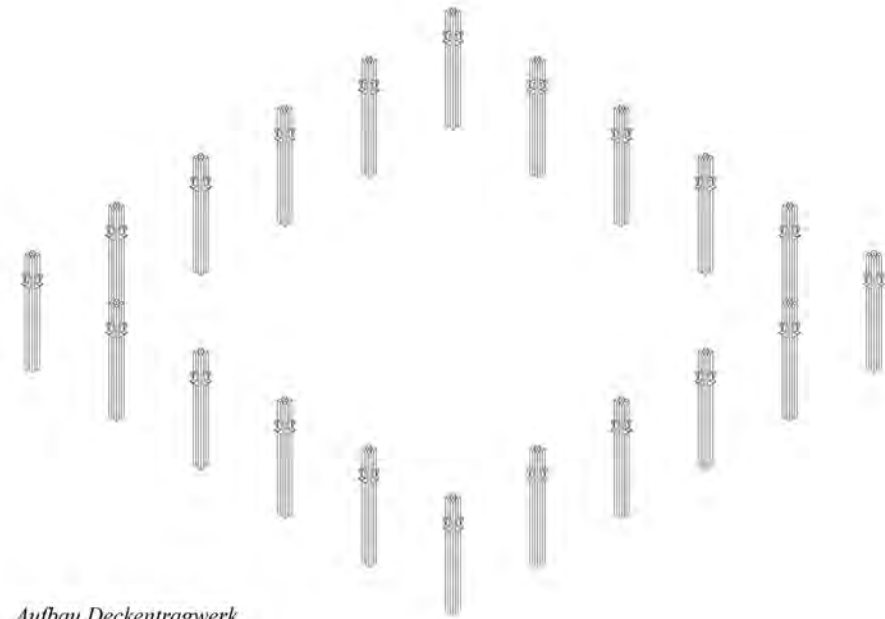
Querschnitt



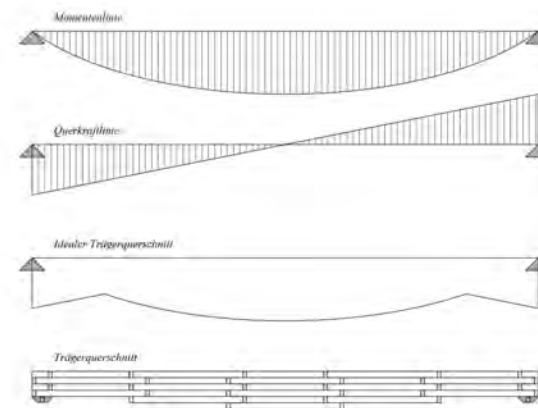
Längsschnitt



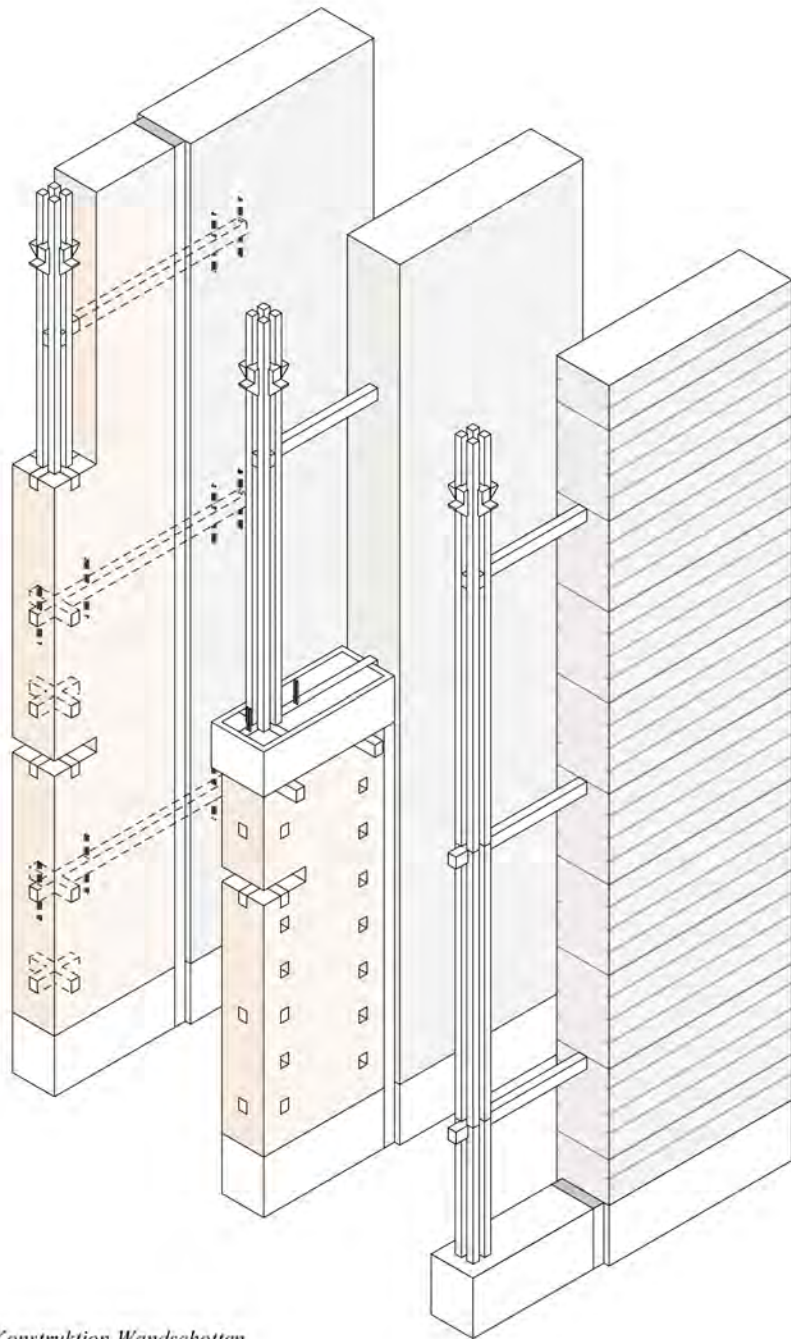
*Konstruktion Wandschotten
Tragwerk & Konstruktion*



Aufbau Deckentragwerk



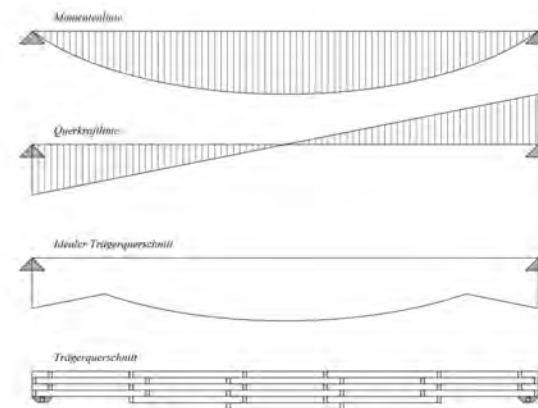
Herleitung Trägerquerschnitt



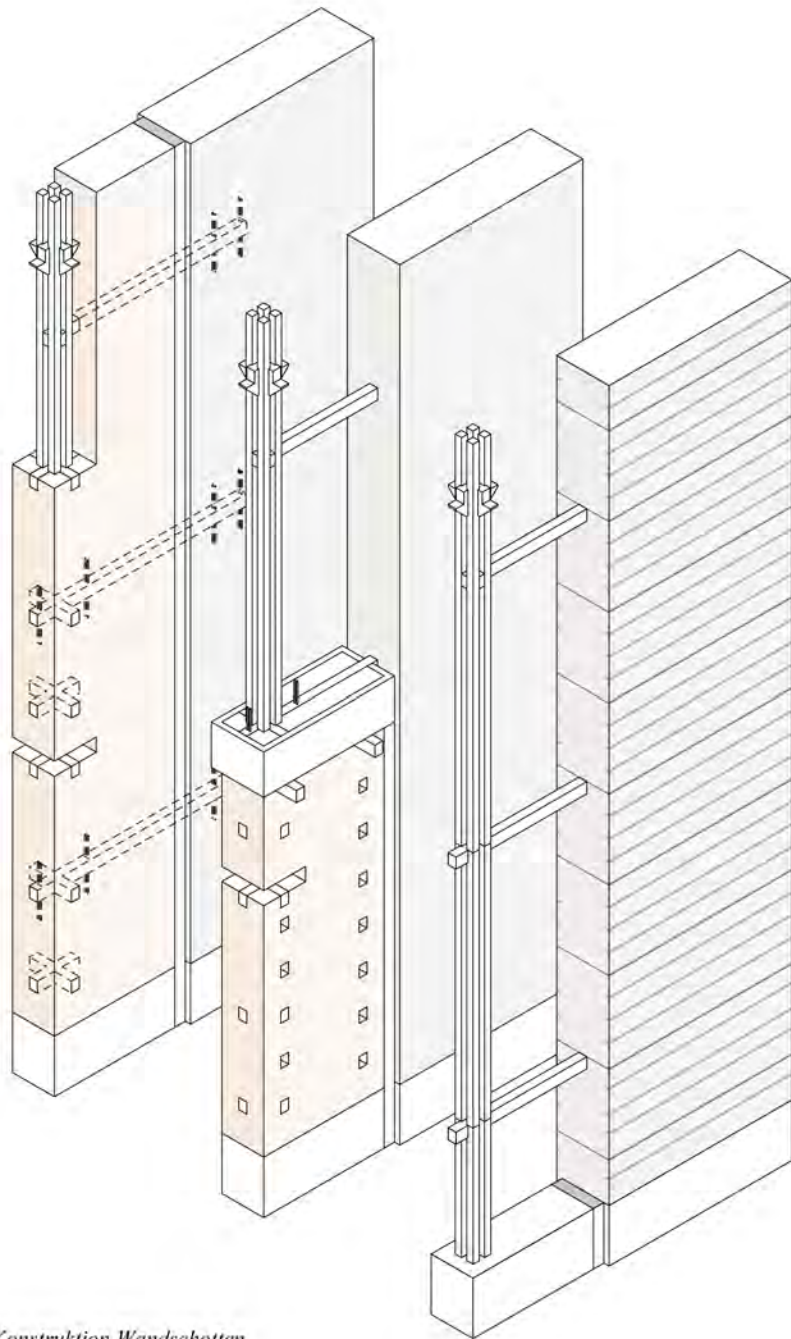
*Konstruktion Wandschotten
Tragwerk & Konstruktion*



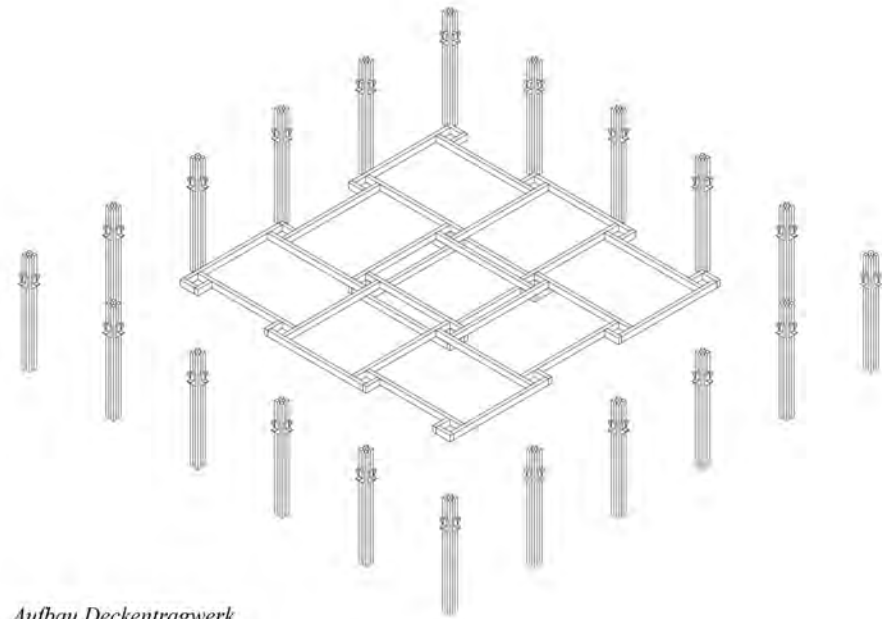
Aufbau Deckentragwerk



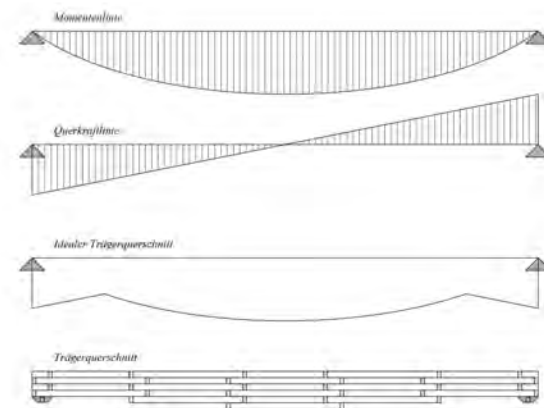
Herleitung Trägerquerschnitt



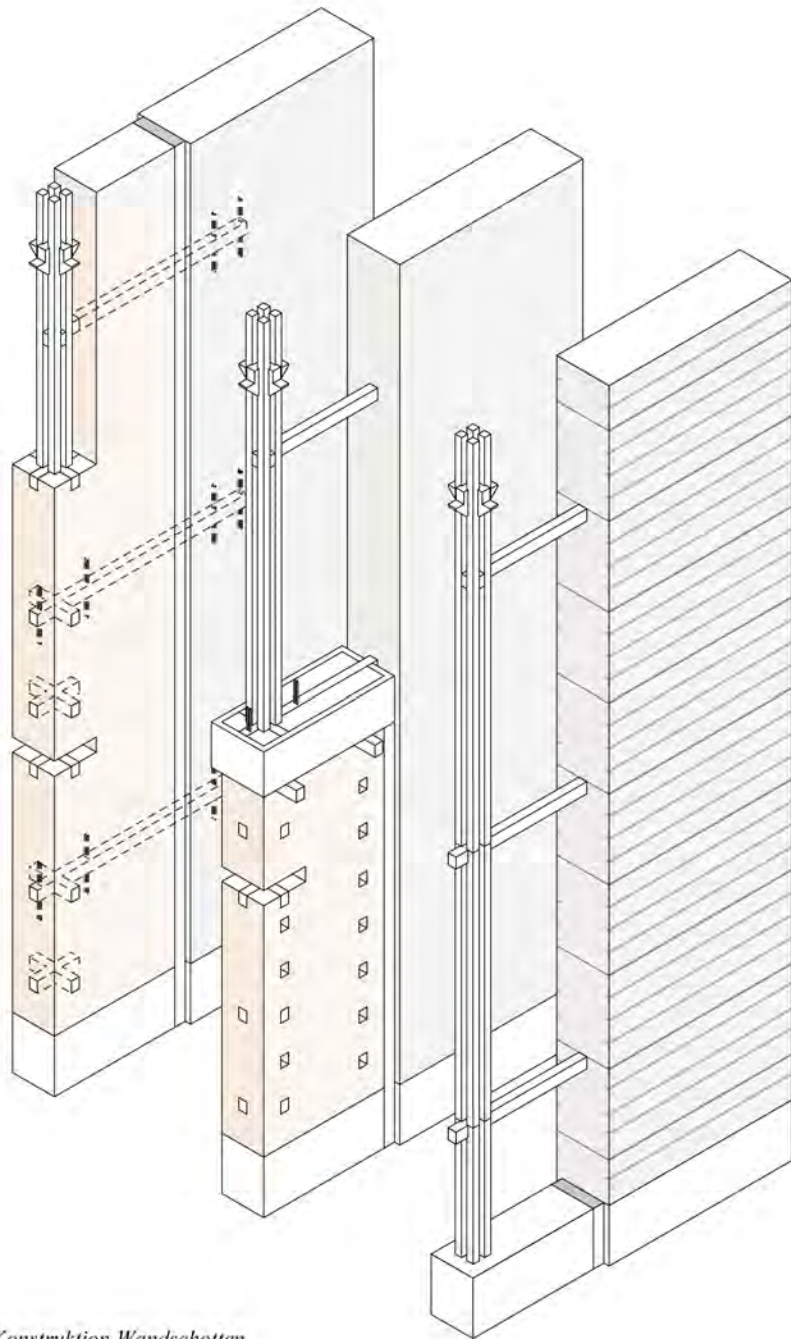
*Konstruktion Wandschotten
Tragwerk & Konstruktion*



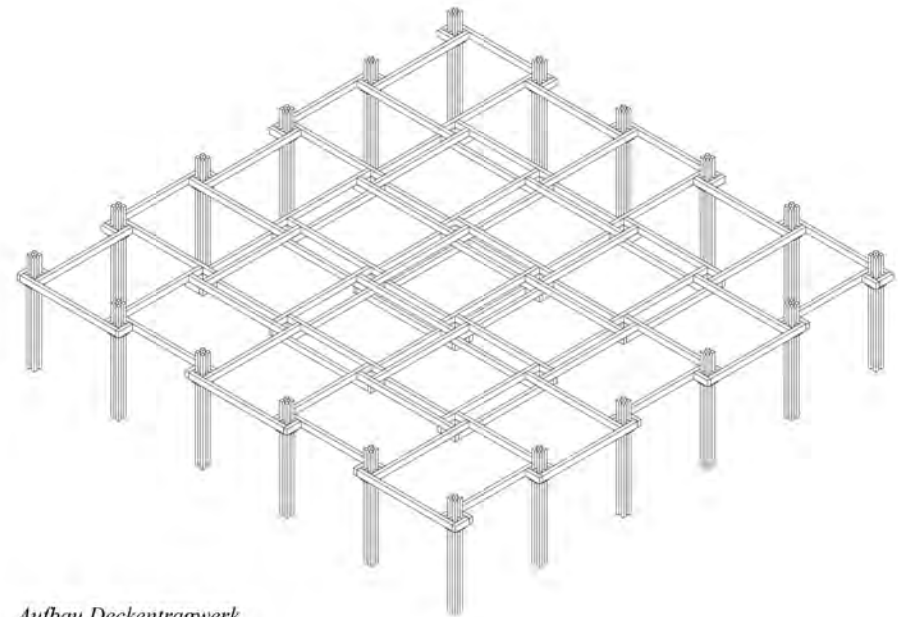
Aufbau Deckentragwerk



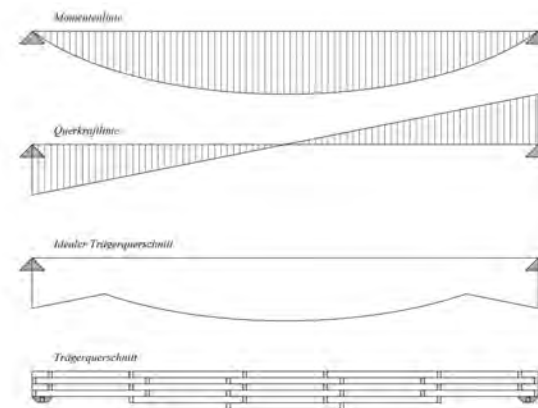
Herleitung Trägerquerschnitt



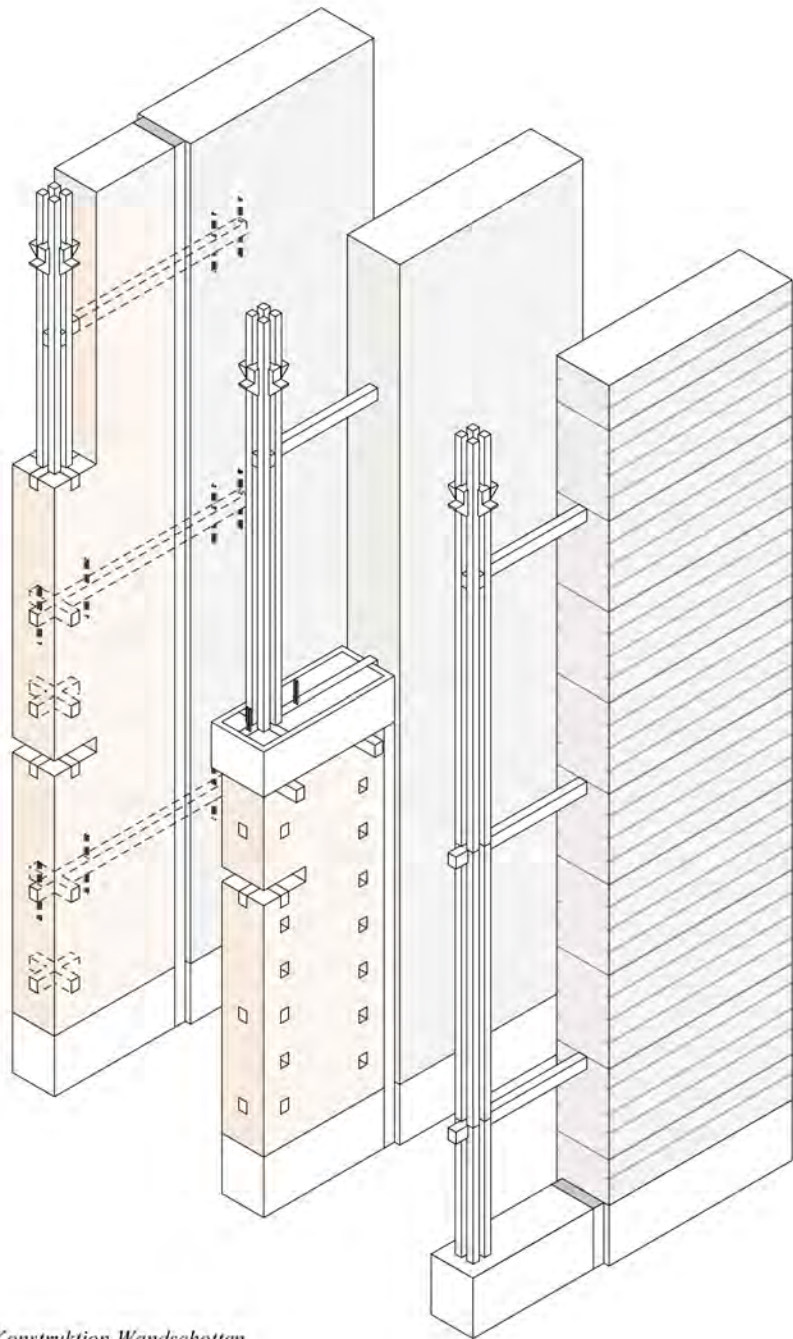
*Konstruktion Wandschotten
Tragwerk & Konstruktion*



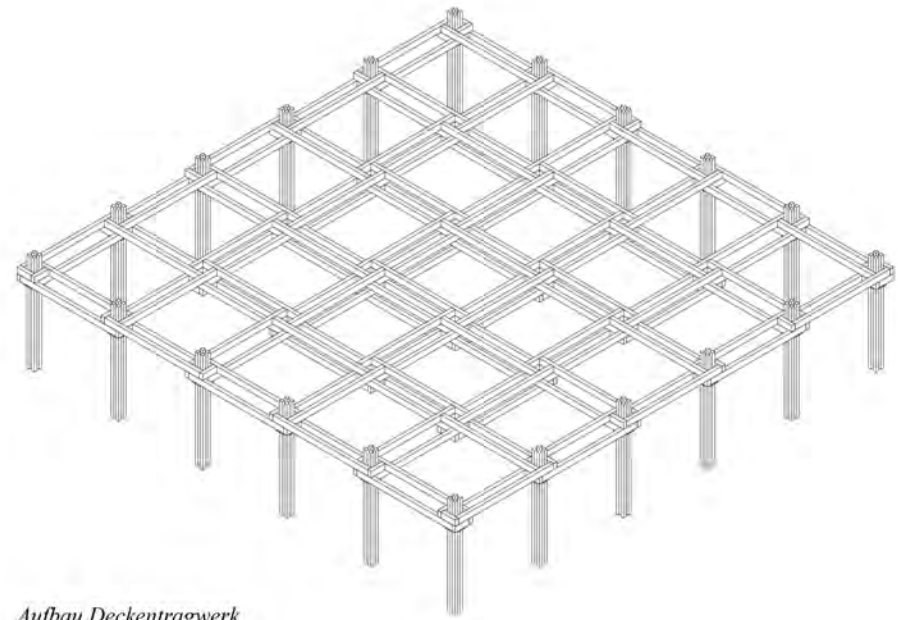
Aufbau Deckentragwerk



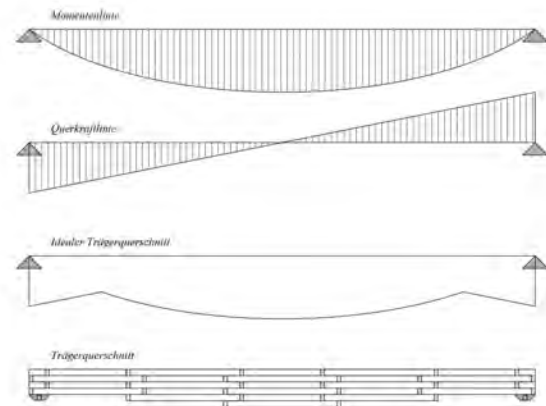
Herleitung Trägerquerschnitt



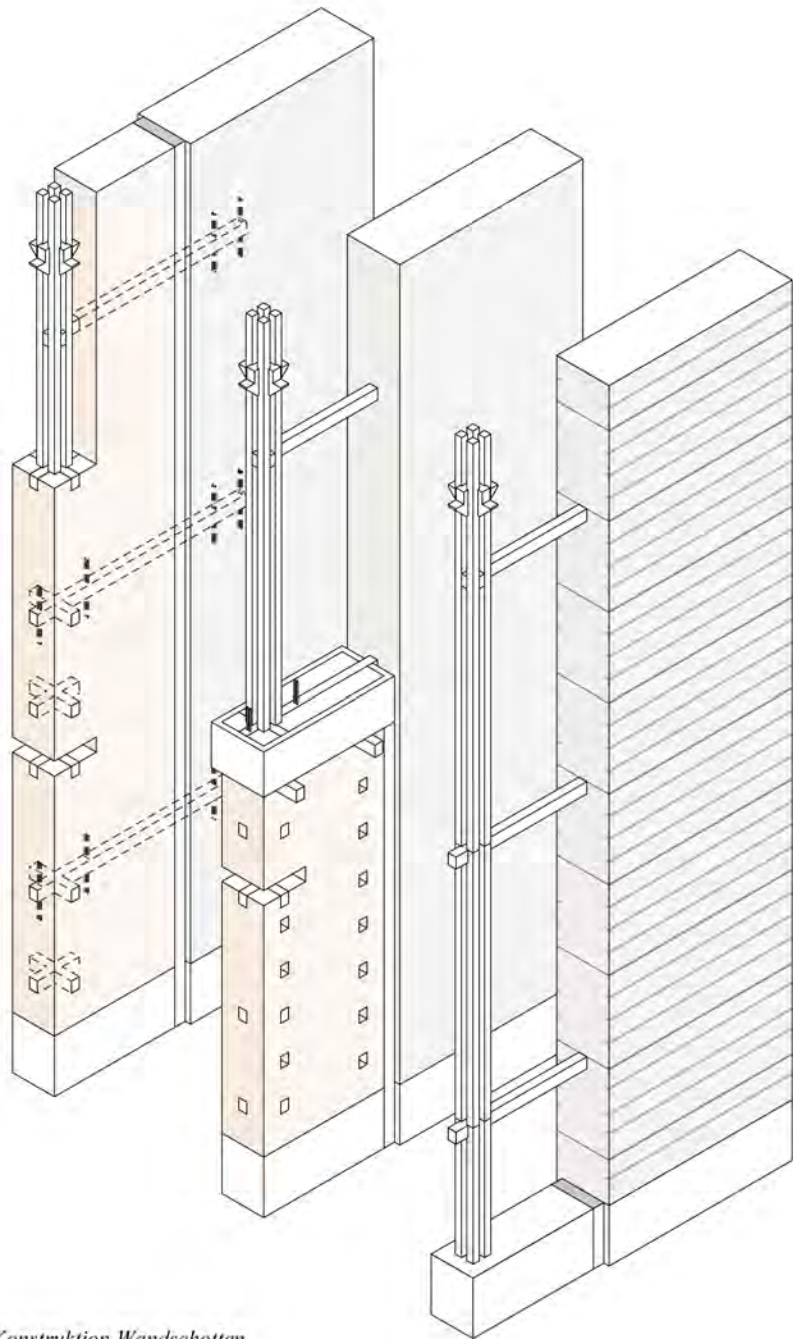
Konstruktion Wandschotten
Tragwerk & Konstruktion



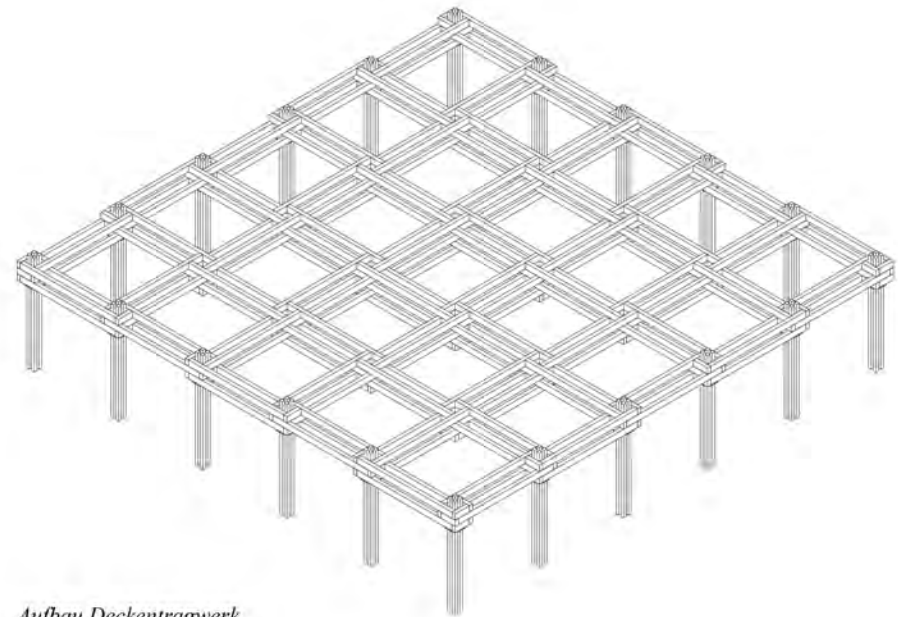
Aufbau Deckentragwerk



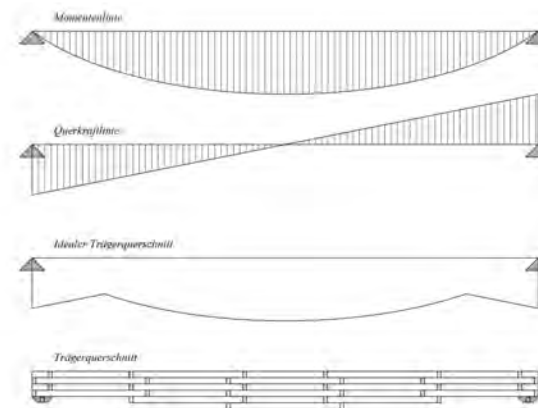
Herleitung Trägerquerschnitt



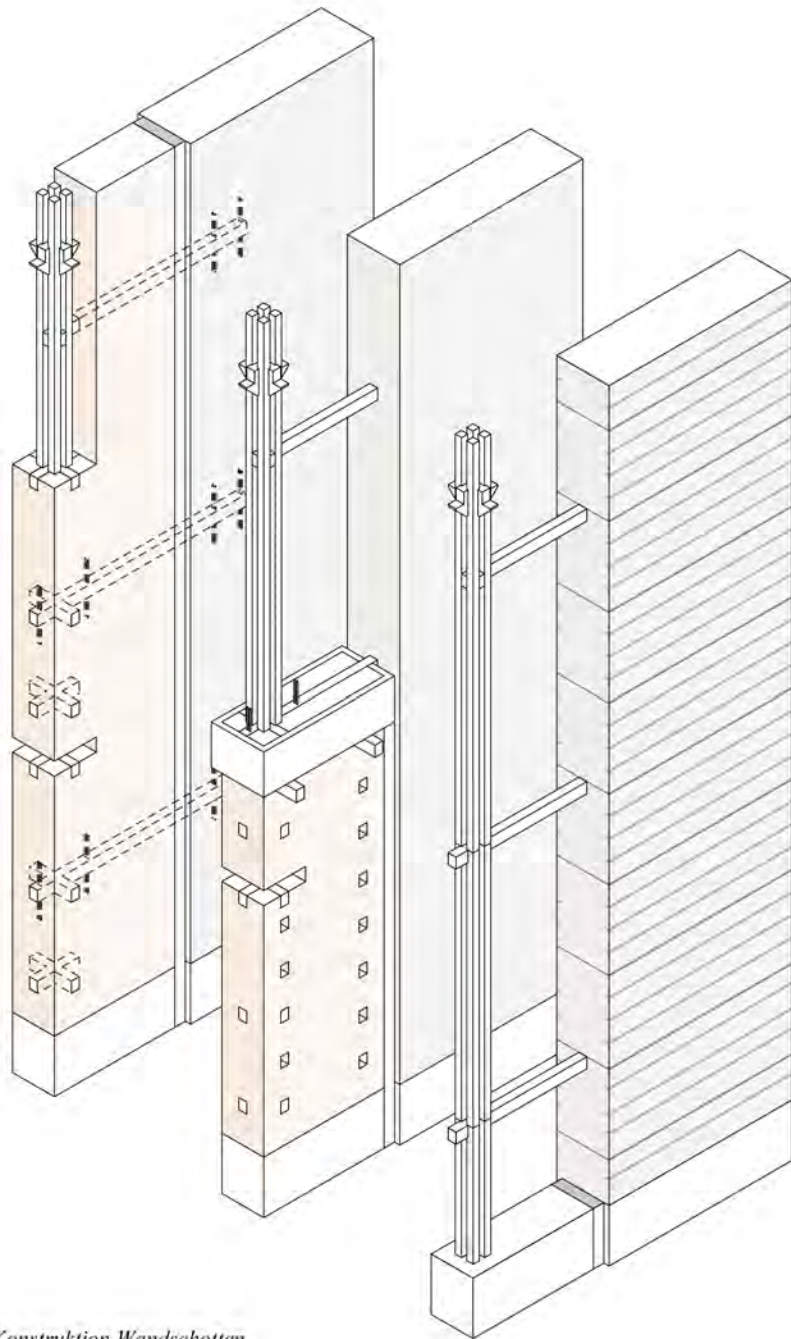
*Konstruktion Wandschotten
Tragwerk & Konstruktion*



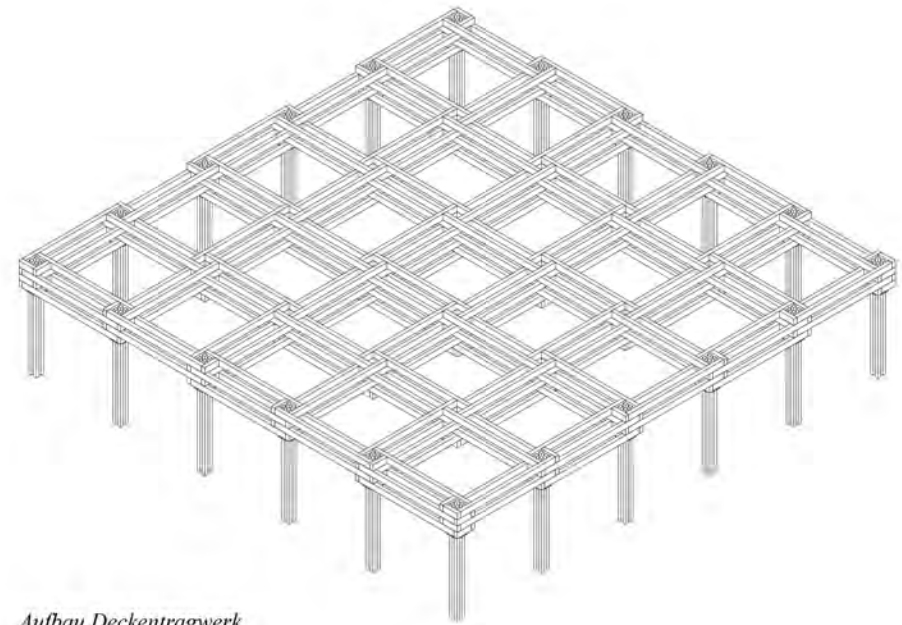
Aufbau Deckentragwerk



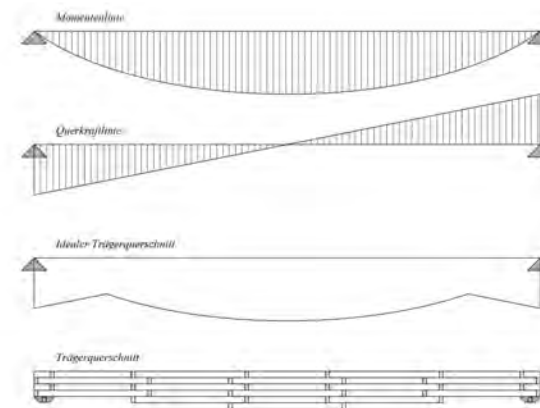
Herleitung Trägerquerschnitt



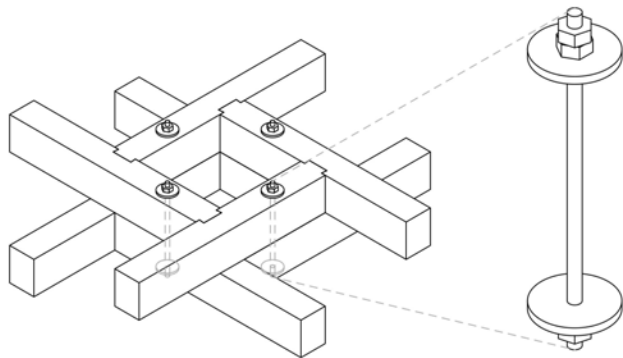
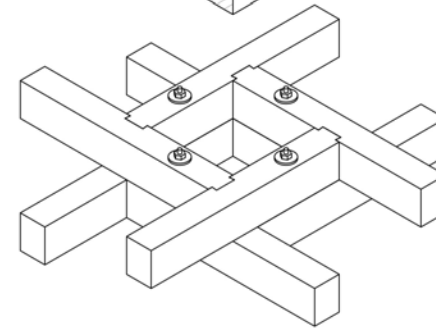
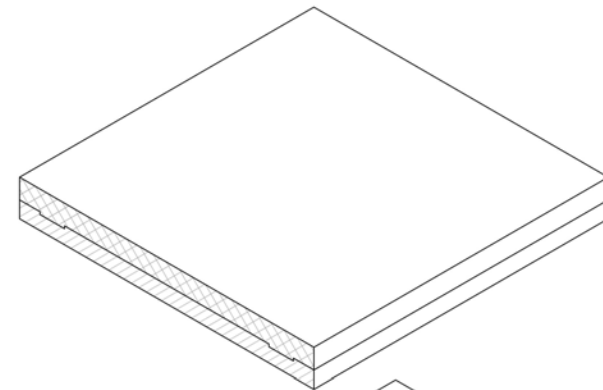
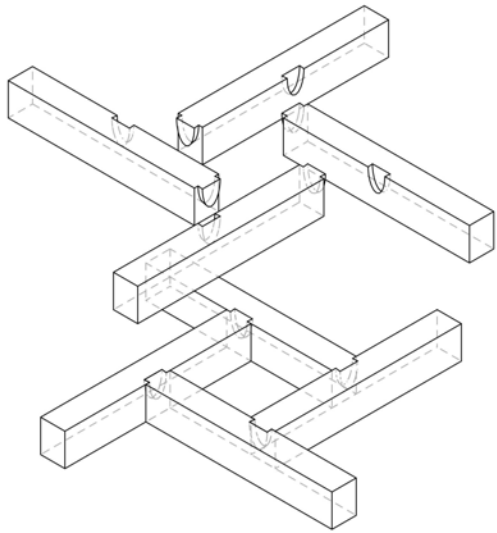
*Konstruktion Wandschotten
Tragwerk & Konstruktion*



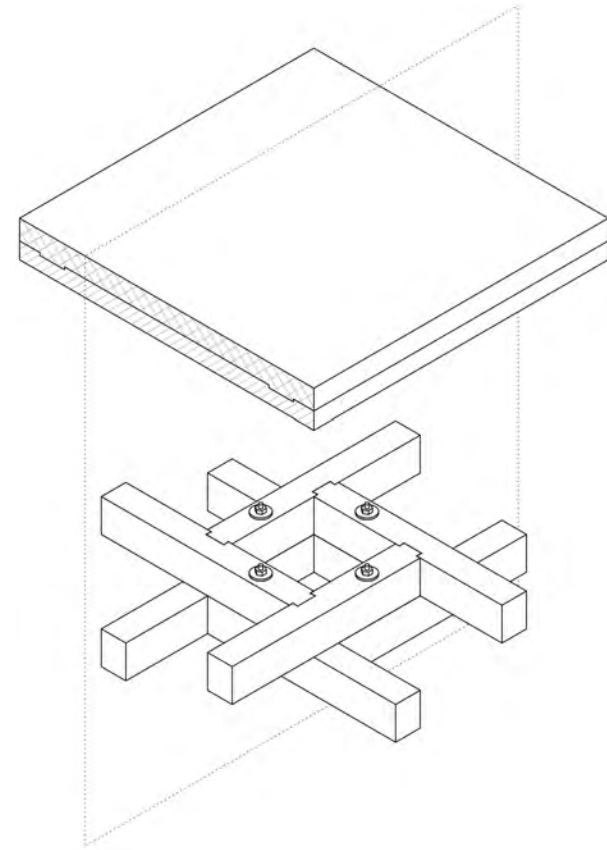
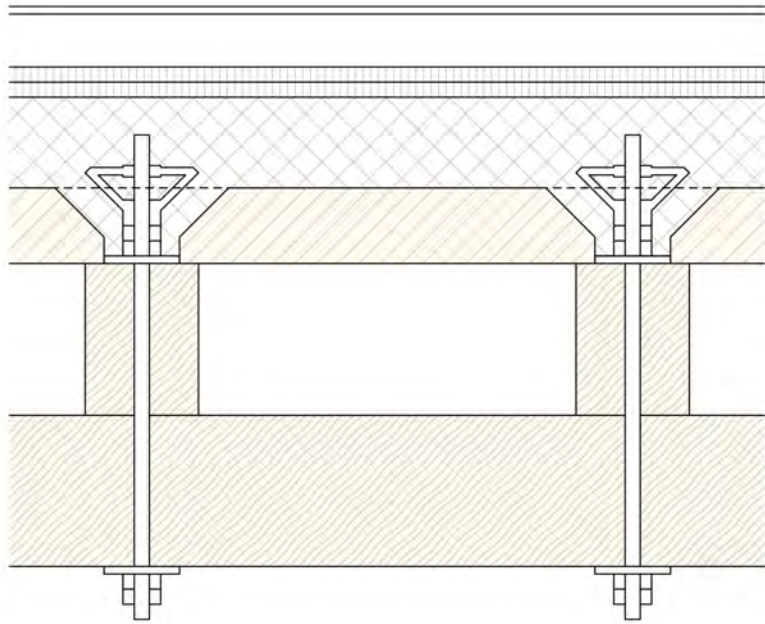
Aufbau Deckentragwerk



Herleitung Trägerquerschnitt

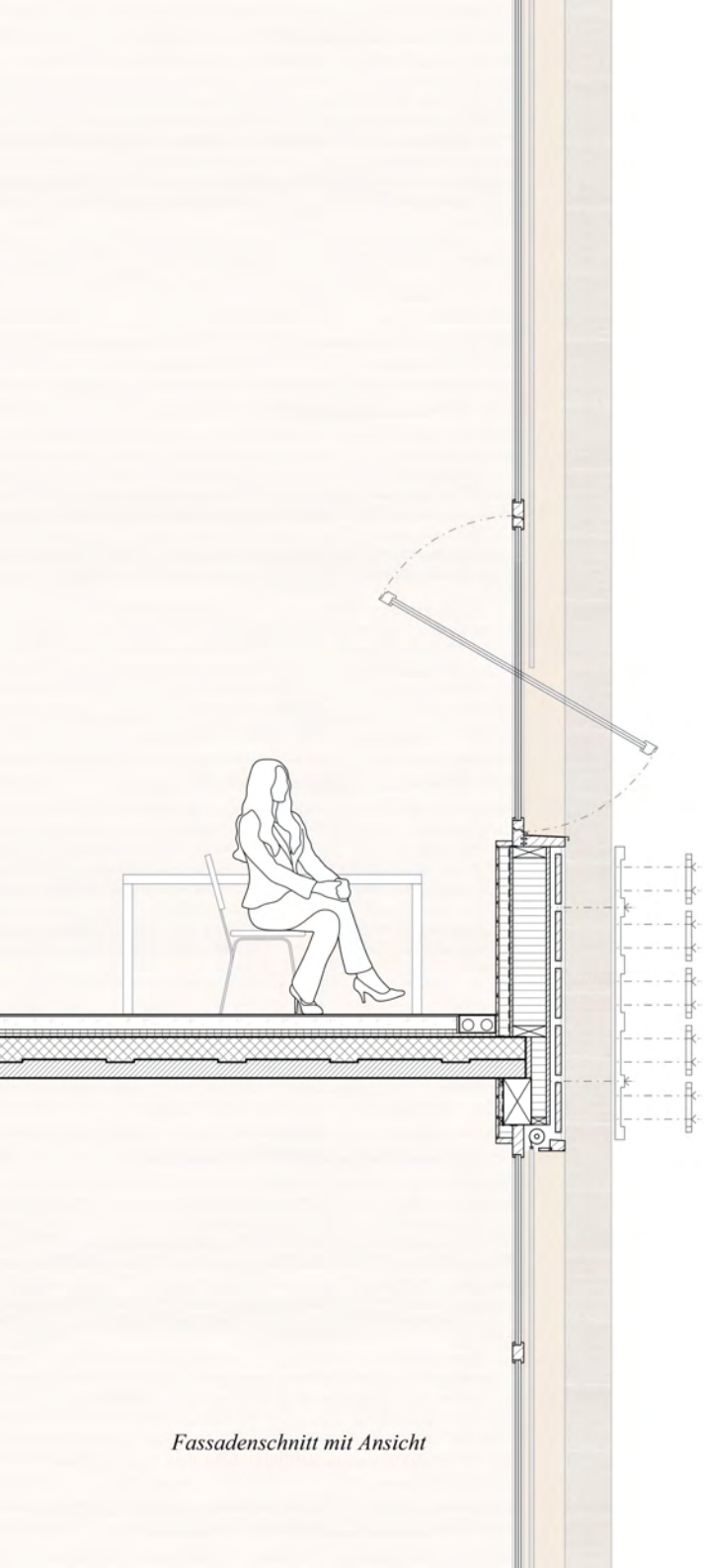


Knoten Deckentragwerk
Tragwerk & Konstruktion



Knoten Deckentragwerk
Tragwerk & Konstruktion





Fassadenschnitt mit Ansicht







